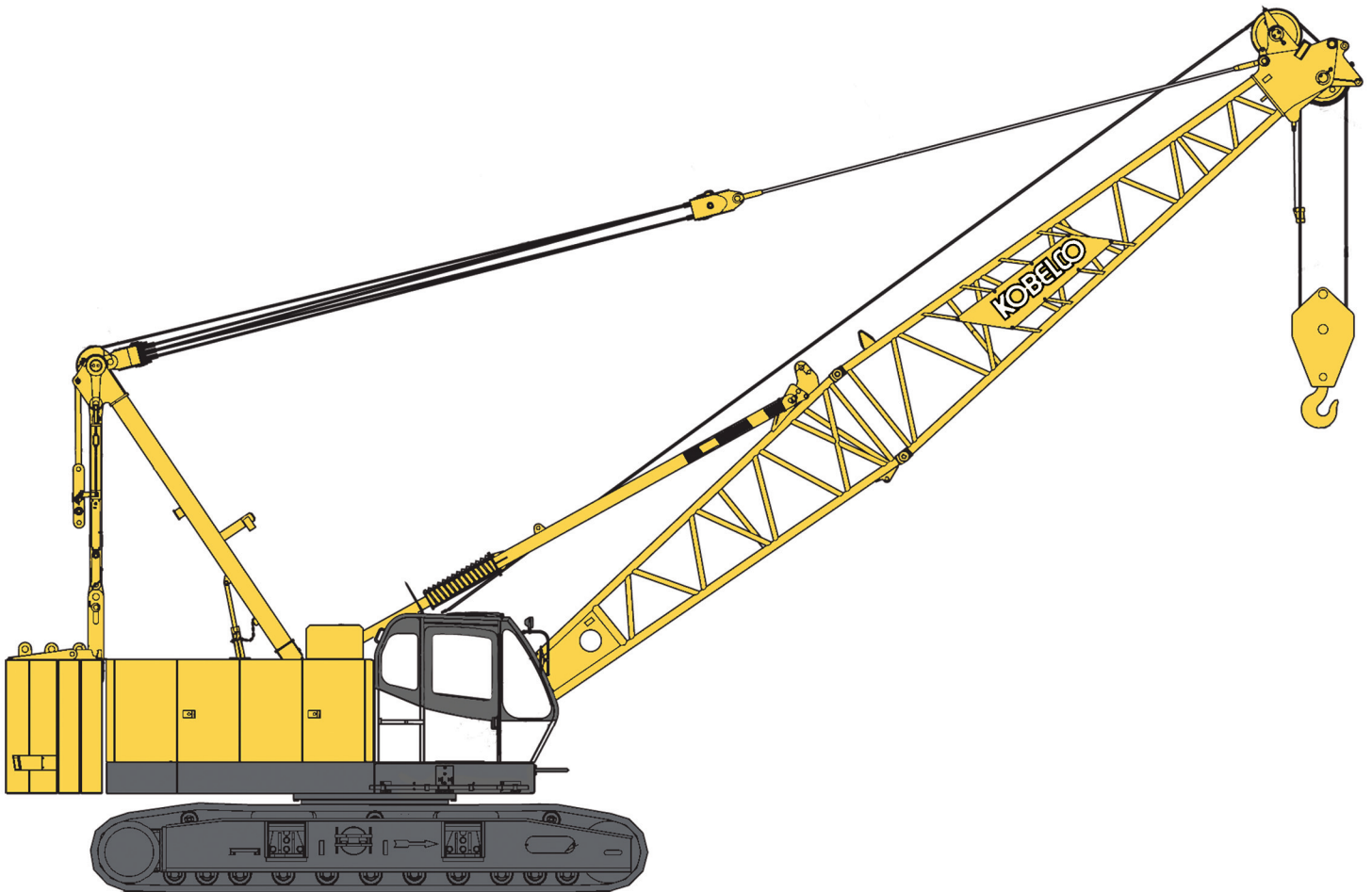


# KOBELCO

# CK1000-III

## HYDRAULIC CRAWLER CRANE



**Max. Lifting Capacity: 100 US Tons**  
**Max. Boom Length: 200 ft**  
**Max. Boom + Jib Length: 190 ft + 60 ft**

# SPECIFICATIONS FOR CK1000-III CRAWLER CRANE

The Kobelco CK1000-III Crawler Crane is designed from the ground up for reliable operation, convenient maintenance and easy transport. Please consult your Kobelco distributor for additional information regarding specifications, operating parameters and maintenance requirements.

## 1. GENERAL DESCRIPTION

|                                      |   |
|--------------------------------------|---|
| <b>Type</b>                          | Crawler mounted, fully revolving                                    |
| <b>Maximum lifting capacity</b>      | 200,000 lbs (90,700 kg)<br>(at 11' operating radius, with 40' boom) |
| <b>Basic boom length</b>             | 40' (12.2 m)  |
| <b>Maximum boom length</b>           | 200' (61.0 m)   |
| <b>Basic boom &amp; jib length</b>   | 80' + 30' (24.4 m + 9.1 m)  |
| <b>Maximum boom &amp; jib length</b> | 190' + 60' (57.9 m + 18.3 m)  |
| <b>Working weight</b>                | Approx. 179,700 lbs (81,500 kg)                                     |
| <b>Ground bearing pressure</b>       | Approx. 11.0 psi (75.6 kPa)   |
| <b>Gradeability</b>                  | 40 %  |

Calculations to determine working weight, ground pressure and gradeability include the weight of the upper and lower works of the crane, counterweights and carbody weights, 40' boom and hook block.

## 2. GENERAL DIMENSIONS

|   |                  |
|---|------------------|
| <b>Height to top of gantry (lowered)</b>          | 10' 11" (3.32 m) |
| <b>Width of upper machine with operator's cab</b> | 10' 6" (3.20 m)  |
| <b>Radius of rear end (counterweight)</b>         | 14' 4" (4.38 m)  |
| <b>Counterweight ground clearance</b>             | 3' 8" (1.12 m)   |
| <b>Center of rotation to boom foot pin</b>        | 3' 7" (1.10 m)   |
| <b>Height from ground to boom foot pin</b>        | 5' 10" (1.77 m)  |
| <b>Height over gantry (raised)</b>                | 20' 4" (6.20 m)  |
| <b>Overall length of crawler</b>                  | 20' 8" (6.30 m)  |
| <b>Center to center of tumblers</b>               | 17' 10" (5.44 m) |
| <b>Overall width of crawlers</b>                  | 16' 10" (5.14 m) |
| <b>Shoe width</b>                                 | 36" (0.91 m)     |
| <b>Ground clearance of carbody</b>                | 15" (0.39 m)     |

## 3. WORKING SPEED

|  |                                     |
|--|-------------------------------------|
| <b>Hoist line speed (front and rear drum)</b>    | 390 ~ 10 ft/min (120 ~ 3 m/min)     |
| <b>Lowering line speed (front and rear drum)</b> | 390 ~ 10 ft/min (120 ~ 3 m/min)     |
| <b>Boom hoist line speed</b>                     | 230 ~ 7 ft/min (70 ~ 2 m/min)       |
| <b>Boom lowering line speed</b>                  | 230 ~ 7 ft/min (70 ~ 2 m/min)       |
| <b>Swing speed</b>                               | 4.0 rpm (4.0 min <sup>-1</sup> )    |
| <b>Travel speed (High / Low)</b>                 | 1.18 / 0.75 mph (1.9 / 1.2 km/hour) |

Line speed based on single line, no load and first layer of rope on the drum. Line speed is controllable by Dial-type Speed Control System.

## 4. UPPER MACHINERY

### 4.1 Power plant

#### Diesel engine, make and model

Hino P11C-UN (Comply with EPA "Tier 3")

|                         |  |
|-------------------------|--|
| <b>No. of cylinders</b> | 6                                      |
| <b>Bore X stroke</b>    | 4-13/16" X 5-7/8"<br>(122 mm X 150 mm) |

|                               |  |
|-------------------------------|--|
| <b>Cycles</b>                 | 4  |
| <b>Total displacement</b>     | 642 cu.in (10,520 cm <sup>3</sup> )                    |
| <b>Rated output SAE GROSS</b> | 331 HP / 2,000 rpm (247 kW / 2,000 min <sup>-1</sup> ) |

|                       |  |
|-----------------------|--|
| <b>Maximum torque</b> | 959 lbs-ft / 1,500 rpm (1,300 Nm / 1,500 min <sup>-1</sup> ) |
|-----------------------|--|

|                |                   |
|----------------|-------------------|
| <b>Starter</b> | 24 Volts / 6.0 kW |
|----------------|-------------------|

|                   |                   |
|-------------------|-------------------|
| <b>Alternator</b> | 24 Volts / 50 Amp |
|-------------------|-------------------|

**Batteries**  
Two 12 volt, 170 AH/20 HR capacity series connected.

**Radiator**  
Corrugated type core, thermostatically controlled.

**Throttle**  
Twist grip type hand throttle, electrically controlled.

**Air cleaner** Dry type with replaceable paper element.

**Fuel tank capacity** 106 US gal. (400 liters)

**Lube oil filter**  
Full flow and by-pass type with element type.

**Fuel filter** Replaceable paper element.

**Approximate fuel consumption**  
0.362 lb / HP-hr (220 g / kW-hr)  
17.3 US gal. / hr at 100 % HP

### 4.2 Hydraulic pumps

All driven from heavy duty pump drive.

#### Load hoist, boom hoist, and propel

2 Piston pumps, max flow rate 68.1 US gal./min x 2  
(258 ℓ/min x 2)

#### Swing

1 Piston pump, max flow rate 46.2 US gal./min  
(175 ℓ/min)

#### Control system and auxiliary

2 Gear pumps, max flow rate  
16.7 US gal./min x 10.6 US gal (61 ℓ/min x 40 ℓ/min)

#### Brake cooling system

2 Gear pumps, max flow rate 16.7 US gal./min x 2  
(61 ℓ/min x 2)

### 4.3 Counterweight and carbody weight

**Counterweight (A)** 1 x 26,630 lbs (12,070 kg)

**Counterweight (B)** 1 x 16,250 lbs (7,370 kg)

**Counterweight (B)** 1 x 20,610 lbs (9,350 kg)

**Total weight** 63,490 lbs (28,790 kg)

|                       |                          |
|-----------------------|--------------------------|
| <b>Carbody weight</b> | 2 x 8,050 lbs (3,650 kg) |
| <b>Total weight</b>   | 16,100 lbs (7,300 kg)    |

#### 4.4 Gantry

This high folding type gantry is fitted with a sheave frame for boom hoist reeving. Hydraulic lift is standard. It provides full up, full down positions with linkage.

#### 4.5 Operator's cab

Totally enclosed from weather, this full-vision cab has safety glass all around. The adjustable, high-backed seat with armrest is standard, allowing operators to customize the position. Auxiliary controls and instruments are on a side mounted console. A signal horn, windshield wipers, air conditioner are all standard features.

#### 4.6 Controls

At operator's right are console-mounted adjustable short levers for the front and rear drum and the boom hoist control. Beside the operator's seat on the right are two short levers for propel control, individual speed shifts for front drum, rear drum and boom drum. At the operator's left are the console mounted swing lever, knobs for front and rear drum, boom drum pawls, engine start / stop key. A swing brake control switch and signal horn button are on the swing lever.

#### 4.7 Electric system

All wiring corded for easy servicing, individual fused branch circuit.

#### 4.8 Hydraulic system

|                                |   |
|--------------------------------|---|
| <b>Maximum pressure rating</b> | 4,620 psi (31.9 MPa)                              |
| <b>Cooling</b>                 | Oil to air heat exchanger                         |
| <b>Filtration</b>              | Full flow filters with replaceable paper elements |
| <b>Reservoir capacity</b>      | 116 US gal. (440 liters)                          |

#### 4.9 Boom hoist

Powered by hydraulic motor through planetary reducer.

|             |  |
|-------------|--|
| <b>Drum</b> | Single drum.<br>Grooved for 5/8" (16.0 mm) dia. wire rope. |
|-------------|--|

#### Brake

A spring set, hydraulically-released, multiple-disc holding brake is mounted inside the boom hoist motor and is operated through a counter-balance valve. An external ratchet is fitted for locking the drum.

#### 4.10 Front drum

Powered by hydraulic motor through planetary reducer.

|             |  |
|-------------|--|
| <b>Drum</b> | 24.1" (613 mm) P.C.D. X 24.5" (622 mm) LG.<br>Grooved for 1" (26.0 mm) dia. wire rope. |
|-------------|--|

#### Brake

A spring set, hydraulically-released, multiple-disc holding brake is mounted inside the hoist motor and is operated through a counter-balance valve. An external ratchet is fitted for locking the drum.

#### Free-Fall (Standard)

Wet-type disk brake free-fall is mounted inside the drum.

#### 4.11 Rear drum

Powered by hydraulic motor through planetary reducer.

|             |  |
|-------------|--|
| <b>Drum</b> | 24.1" (613 mm) P.C.D. X 24.5" (622 mm) LG.<br>Grooved for 1" (26.0 mm) dia. wire rope. |
|-------------|--|

#### Brake

A spring set, hydraulically-released, multiple-disc holding brake is mounted inside the hoist motor and is operated through a counter-balance valve. An external ratchet is fitted for locking the drum.

#### Free-Fall (Standard)

Wet-type disk brake free-fall is mounted inside the drum.

#### 4.12 Third drum (Optional)

Powered by hydraulic motor through planetary reducer.

|             |  |
|-------------|--|
| <b>Drum</b> | 24.1" (613 mm) P.C.D. X 24.5" (622 mm) LG.<br>Grooved for 1" (26.0 mm) dia. wire rope. |
|-------------|--|

#### Brake

A spring set, hydraulically-released, multiple-disc holding brake is mounted inside the hoist motor and is operated through a counter-balance valve. An external ratchet is fitted for locking the drum.

#### Free-Fall (Standard for third drum)

Wet-type disk brake free-fall is mounted inside the drum.

#### 4.13 Swing

##### Swing unit

Hydraulic motor driving through planetary reducer to output swing pinion for 360 degree rotation.

##### Swing brake

Spring set hydraulically released multiple disk brake mounted on swing motor.

##### Swing circle

Single row ball bearing with internal, integral swing gear.

|                   |                                     |
|-------------------|-------------------------------------|
| <b>Swing Lock</b> | 2 Position lock for transportation. |
|-------------------|-------------------------------------|

## 5. LOWER MACHINERY

#### 5.1 Carbody

The durable carbody features steel welded construction with extendible axles.

## 5.2 Crawler

Crawler assemblies can be hydraulically extended for wide-track operation or retracted for transportation. Crawler belt tension adjusted with hydraulic jack and maintained by shims between the idler block and frame.

## 5.3 Crawler drive

The independent hydraulic propel drive is built into each crawler side frame. Each drive consists of a hydraulic motor driving a propel sprocket through a planetary gear box. The hydraulic motor and gearbox are built into the crawler side frame within the shoe width.

## 5.4 Crawler brakes

Spring set, hydraulically released, multiple disk-type parking brakes are built into each propel drive.

## 5.5 Steering mechanism

The hydraulic propel system provides both skid steering (driving one track only) and counter-rotating steering (driving each track in opposite direction).

## 5.6 Crawler shoes

66 shoes, 36" (914 mm) wide each crawler.

## 5.7 Track rollers

The track rollers are sealed for maintenance-free operation.

# 6. CRANE ATTACHMENTS

## 6.1 Crane boom

The welded lattice construction uses tubular, high-tension steel chords with pin connections between sections.

|                            |               |
|----------------------------|---------------|
| <b>Maximum boom length</b> | 200' (61.0 m) |
| <b>Basic boom length</b>   | 40' (12.2 m)  |
| <b>Boom base section</b>   | 19' (5.8 m)   |
| <b>Boom tip section</b>    | 21' (6.4 m)   |

## 6.2 Boom insert (Optional)

An optional boom insert is available to provide extension capabilities. It also has welded lattice construction with tubular, high-tension steel chords and pin connections.

**Boom insert** 10' (3.1 m), 20' (6.1 m), 40' (12.2 m)

## 6.3 Jib (Optional)

The optional jib employs welded lattice construction with tubular, high-tension steel chords with pin connections between sections.

|                           |                          |
|---------------------------|--------------------------|
| <b>Maximum jib length</b> | 60' (18.3 m)             |
| <b>Basic jib length</b>   | 30' (9.1 m)              |
| <b>Jib base section</b>   | 15' (4.6 m)              |
| <b>Jib tip section</b>    | 15' (4.6 m)              |
| <b>Jib insert</b>         | 10' (3.1 m), 20' (6.1 m) |

Jib inserts are available to provide extension capabilities. They also have welded lattice construction with tubular, high-tension steel chords and pin connections.

Jib is extendible on booms of 80' (24.4 m) through 190' (57.9 m)

## 6.4 Auxiliary sheave (Optional)

Auxiliary sheave is extendible on booms of 40' (12.2 m) to 190' (57.9 m).

## 6.5 Boom hoist reeving

Twelve (12) parts of 5/8" (16.0 mm) dia. high strength wire rope.

## 6.6 Boom backstops

Telescopic type with spring bumper.

# 7. AUXILIARY EQUIPMENT

## 7.1 Lights

Two (2) Front flood lights  
One (1) Cab inside light

## 7.2 Gauges and warning display

### Gauges

One (1) Tachometer  
One (1) Hour meter  
One (1) Fuel gauge  
One (1) Water temperature gauge for engine

### Warning display

Battery charge  
Engine oil pressure  
Air cleaner  
Engine oil filter  
Control main pressure  
Hydraulic oil temperature

## 7.3 Others

Air conditioner  
Drum turn indicator (front and rear drum)  
Foot acceleration pedal  
Electric fuel pump  
Counterweight self-removal device  
Catwalks

# 8. SAFETY SERVICE

Function lock lever  
Boom over hoist limit switch  
Signal horn  
Front and rear hoist drum lock  
Swing alarm (Buzzer and lamps)  
Over load preventive device (Load Moment Indicator)  
Hook over hoist shut off (Anti-two-block)

- Boom angle indicator
- Boom hoist drum lock
- Swing lock
- Boom backstops

## **9. TOOLS AND ACCESSORIES**

A set of tools and accessories are furnished.

## **10. OPTIONAL EQUIPMENT**

- Hydraulic tagline
- Travel kit
- Third drum
- Pillow plate for boom self-erection
- Custom color

All specifications are subject to change without notice.

## Winch Performance Data

**Note:**

Line speed and line pull based on Hino P11C-0N at 2,000 rpm.

Line speed and line pull based on single line. Line pull is not based on wire rope strength.

### Front & Rear Drum

Wire Rope Diameter = 1"

Rated Line Pull = 25,100 lbs (11,380 kg)

Maximum Line Pull = 44,100 lbs (20,000 kg)

Total Storage Capacity = 1,023 ft (312 m)

|                    |                       | Line speed (ft/min) |     |     |     |     |     |                 |
|--------------------|-----------------------|---------------------|-----|-----|-----|-----|-----|-----------------|
|                    |                       | Layer               | 1   | 2   | 3   | 4   | 5   | 6               |
|                    |                       | 0                   | 394 | 420 | 449 | 476 | 505 |                 |
|                    |                       | 5,000               | 394 | 420 | 449 | 476 | 505 |                 |
|                    |                       | 10,000              | 390 | 420 | 446 | 476 | 502 |                 |
| Line Pull<br>(lbs) | 15,000                | 381                 | 381 | 381 | 381 | 381 | 381 | storage<br>only |
|                    | 20,000                | 285                 | 285 | 285 | 285 | 285 | 285 |                 |
|                    | 25,100                | 226                 | 226 | 236 | 233 | 230 |     |                 |
|                    | 30,000                | 194                 | 190 | 184 | 177 | 164 |     |                 |
|                    | 35,000                | 157                 | 148 | 138 | 135 |     |     |                 |
|                    | 44,100                | 105                 |     |     |     |     |     |                 |
|                    | Storage Capacity (ft) |                     | 145 | 155 | 165 | 176 | 186 |                 |

### Third Drum (for Load hoist)

Wire Rope Diameter = 1"

Rated Line Pull = 25,100 lbs (11,380 kg)

Maximum Line Pull = 44,100 lbs (20,000 kg)

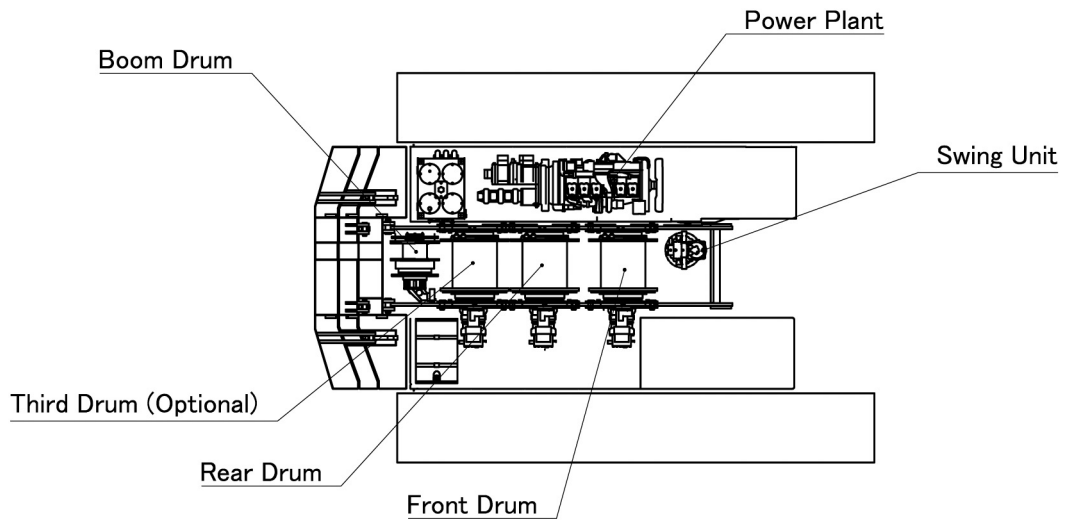
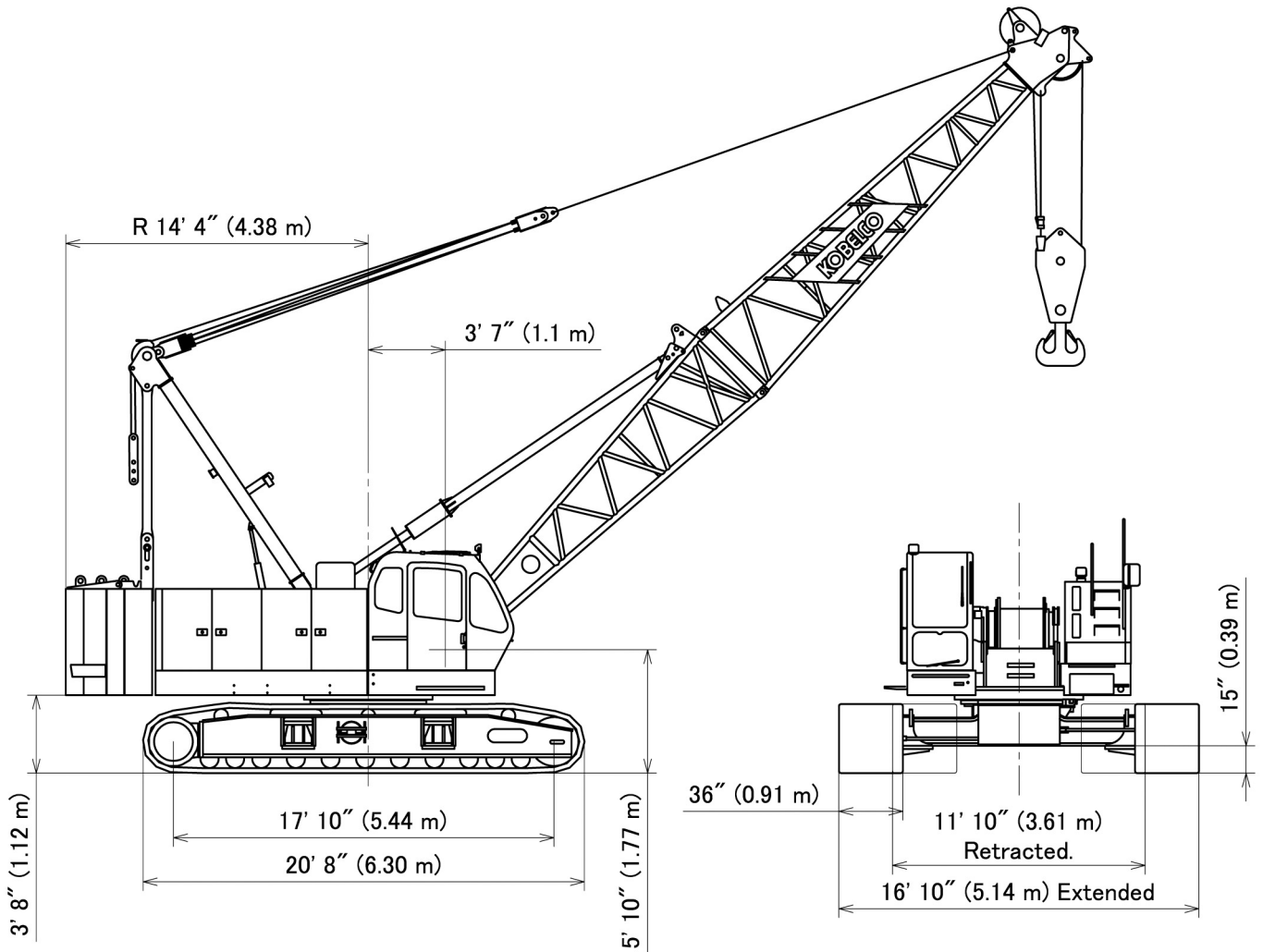
Total Storage Capacity = 1,023 ft (312 m)

|                    |                       | Line speed (ft/min) |     |     |     |     |     |                 |
|--------------------|-----------------------|---------------------|-----|-----|-----|-----|-----|-----------------|
|                    |                       | Layer               | 1   | 2   | 3   | 4   | 5   | 6               |
|                    |                       | 0                   | 410 | 436 | 466 | 495 | 525 |                 |
|                    |                       | 5,000               | 406 | 434 | 463 | 492 | 520 |                 |
|                    |                       | 10,000              | 356 | 356 | 356 | 356 | 356 |                 |
| Line Pull<br>(lbs) | 15,000                | 237                 | 237 | 237 | 237 | 237 | 237 | storage<br>only |
|                    | 20,000                | 178                 | 178 | 178 | 178 | 178 | 178 |                 |
|                    | 25,100                | 142                 | 142 | 142 | 142 | 142 |     |                 |
|                    | 30,000                | 119                 | 119 | 119 | 127 | 134 |     |                 |
|                    | 35,000                | 105                 | 112 | 118 | 125 |     |     |                 |
|                    | 44,100                | 103                 |     |     |     |     |     |                 |
|                    | Storage Capacity (ft) |                     | 145 | 155 | 165 | 176 | 186 |                 |

## Wire Rope Specifications

| Use                      | Construction  | No load diameter                           | Length          | Safety Factor | Required minimum breaking strength |
|--------------------------|---|--|-----------------|---------------|------------------------------------|
| Front drum               | 6 x 25 Filler IWRC<br>Right hand lay, Regular lay     | 1.050" to 1.069"<br>(26.65 mm to 27.17 mm) | 771'<br>(235 m) | 3.5: 1        | 87,850 lbs<br>(39,850 kg)          |
| Rear drum                | 6 x 25 Filler IWRC<br>Right hand lay, Regular lay     | 1.050" to 1.069"<br>(26.65 mm to 27.17 mm) | 525'<br>(160 m) | 3.5: 1        | 87,850 lbs<br>(39,850 kg)          |
| Third drum<br>(Optional) | 6 x 25 Filler IWRC<br>Right hand lay, Regular lay     | 1.050" to 1.069"<br>(26.65 mm to 27.17 mm) | 623'<br>(190 m) | 3.5: 1        | 87,850 lbs<br>(39,850 kg)          |
| Boom drum                | 6 x 31 Warrington seal<br>Right hand lay, Regular lay | 0.639" to 0.653"<br>(16.24 mm to 16.58 mm) | 492'<br>(150 m) | 3.5: 1        | 47,180 lbs<br>(21,400 kg)          |

# CK1000-III General Dimensions



# CK1000-III Dimensions and Weight **KOBELCO**

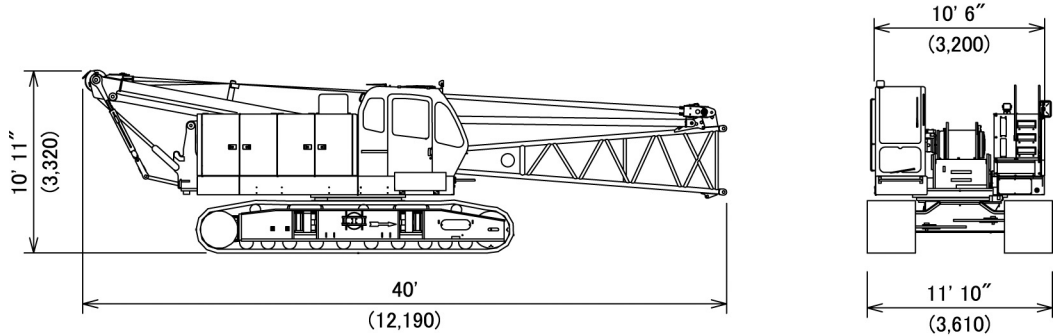
Dimensions: ft-in (mm)    Weight: lbs (kg)

When installing optional third drum, add 5,850 lbs (2,650 kg)

## Base Machine -1

Weight: 99,650 lbs (45,200 kg)

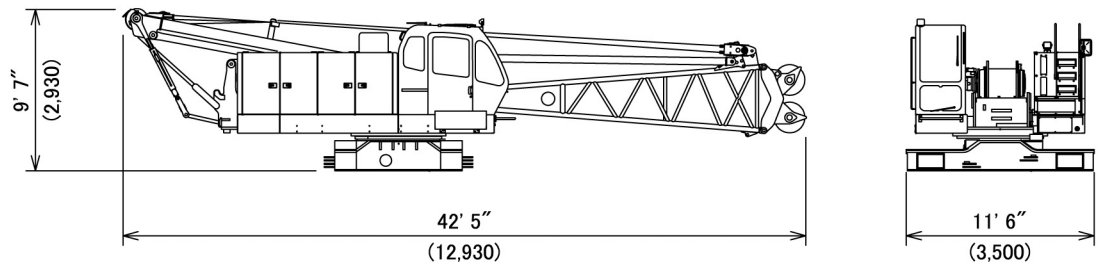
Boom base, Gantry, Crawler, Wire ropes (Front, Rear and Boom hoist drums)



## Base Machine -2

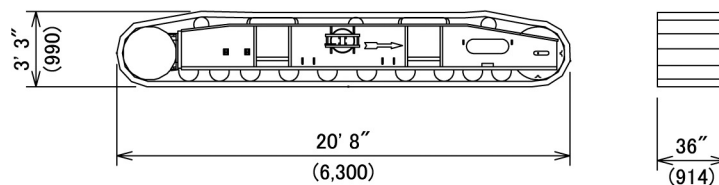
Weight: 71,100 lbs (32,250 kg)

Boom base, Auxiliary sheave for self-assembly, Wire ropes (Front, Rear and Boom hoist drums)



## Crawler

Weight: 16,540 lbs (7,500 kg)



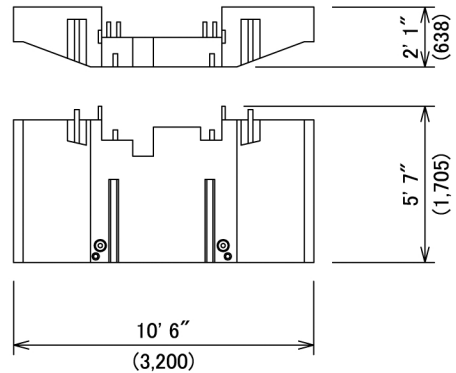


# CK1000-III Dimensions and Weight **KOBELCO**

Dimensions: ft-in (mm)    Weight: lbs (kg)

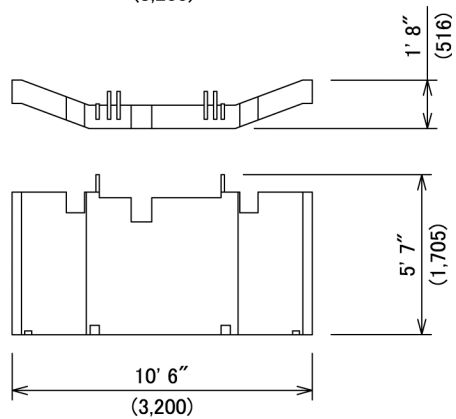
## Counterweight (A)

Weight: 26,630 lbs (12,070 kg)



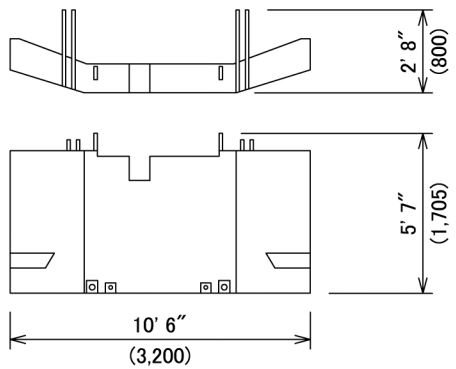
## Counterweight (B)

Weight: 16,250 lbs (7,370 kg)



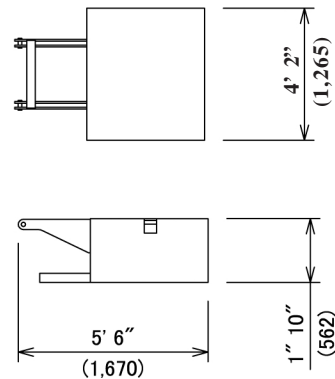
## Counterweight (C)

Weight: 20,610 lbs (9,350 kg)



## Carbody Weight

Weight: 8,050 lbs (3,650 kg)



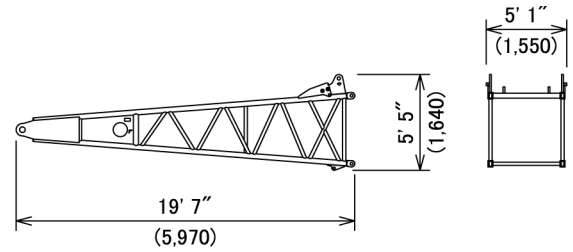
# CK1000-III Dimensions and Weight



Dimensions: ft-in (mm)    Weight: lbs (kg)

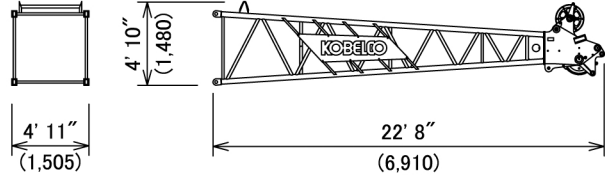
## Boom Base

Weight: 3,250 lbs (1,475 kg)



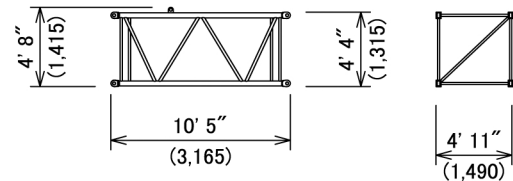
## Boom Tip

Weight: 2,730 lbs (1,240 kg)  
Includes cable roller and guy lines.



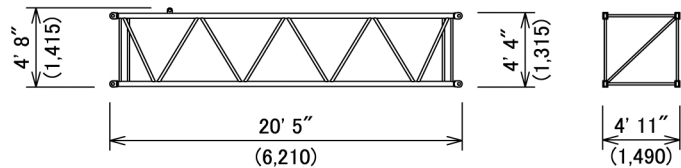
## 10 ft (3.0 m) Insert Boom

Weight: 830 lbs (380 kg)  
Includes cable roller and guy lines.



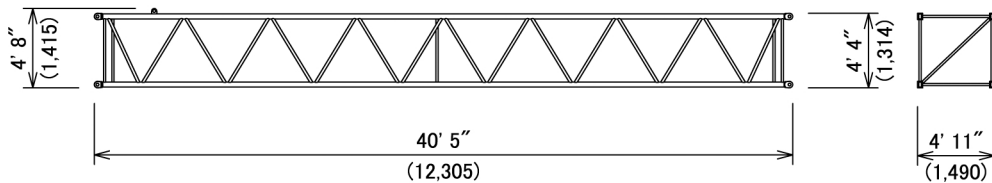
## 20 ft (6.1 m) Insert Boom

Weight: 1,350 lbs (610 kg)  
Includes cable roller and guy lines.



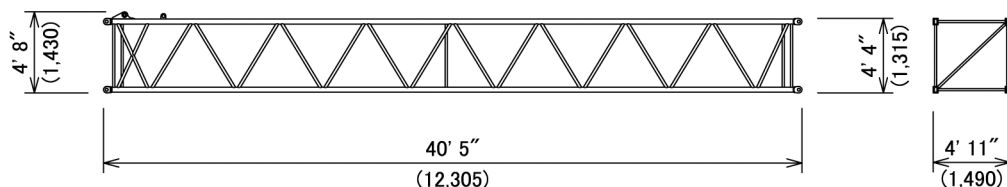
## 40 ft (12.2 m) Insert Boom

Weight: 2,410 lbs (1,090 kg)  
Includes cable roller and guy lines.



## 40 ft (12.2 m) Insert Boom (with lug)

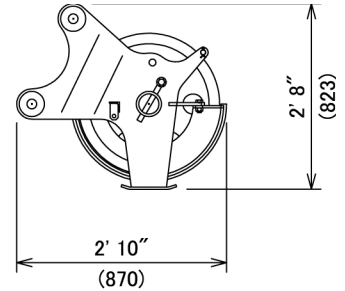
Weight: 2,440 lbs (1,110 kg)  
Includes cable roller and guy lines.



Dimensions: ft-in (mm)    Weight: lbs (kg)

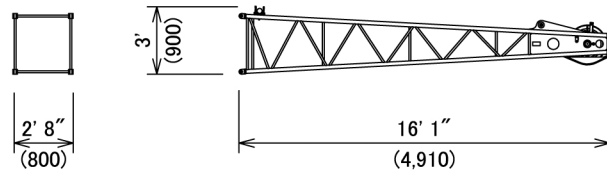
## Auxiliary Sheave

Weight: 430 lbs (195 kg)



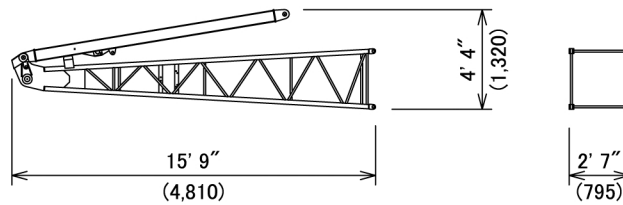
## Jib Tip

Weight: 620 lbs (280 kg)  
Includes cable roller.



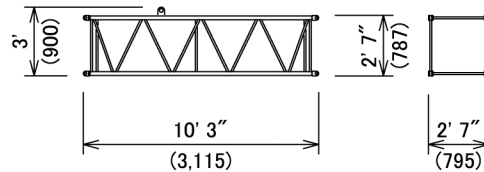
## Jib Base and Strut

Weight: 1,310 lbs (590 kg)  
Includes guy line.



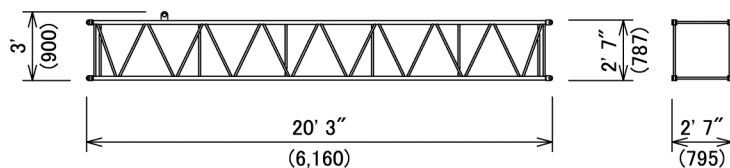
## 10 ft (3.0 m) Insert Jib

Weight: 290 lbs (130 kg)  
Includes cable roller and guy line.



## 20 ft (6.1 m) Jib Insert

Weight: 490 lbs (220 kg)  
Includes cable roller and guy line.



# CK1000-III Transportation Plan



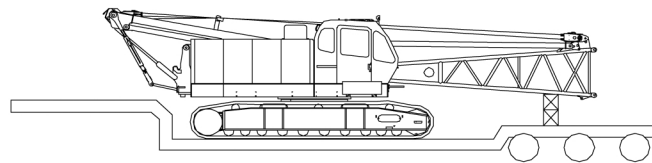
## Shipping plan for 200 ft Boom and 60 ft Jib

| Description of Item                       | Weight |             | Trailer Loads      |                    |                    |                   |
|---|--------|-------------|--------------------|--------------------|--------------------|-------------------|
|   | lbs    | (kg)        | #1                 | #2                 | #3                 | #4                |
| Base Machine with Boom Base and Crawlers* | 99,970 | (45,350)    | 1                  |                    |                    |                   |
| Counterweight (A)                         | 26,630 | (12,070)    |                    | 1                  |                    |                   |
| Counterweight (B)                         | 16,250 | (7,370)     |                    |                    | 1                  |                   |
| Counterweight (C)                         | 20,610 | (9,350)     |                    |                    | 1                  |                   |
| Carbody Weight                            | 8,050  | (3,650)     |                    | 1                  |                    | 1                 |
| 10 ft Insert Boom and Guy Line            | 830    | (380)       |                    | 1                  | 1                  |                   |
| 20 ft Inset Boom and Guy Line             | 1,350  | (610)       |                    |                    |                    | 1                 |
| 40 ft Insert Boom and Guy Line            | 2,410  | (1,090)     |                    | 1                  | 1                  |                   |
| 40 ft Insert Boom (w/ Lug) and Guy Line   | 2,440  | (1,110)     |                    |                    |                    | 1                 |
| Boom Tip and Guy Line                     | 2,730  | (1,240)     |                    |                    |                    | 1                 |
| Jib Base and Guy Line                     | 1,310  | (590)       |                    |                    | 1                  |                   |
| 10 ft Inset Jib and Guy Line              | 290    | (130)       |                    |                    | 1                  |                   |
| 20 ft Inset Jib and Guy Line              | 490    | (220)       |                    |                    | 1                  |                   |
| Jib Tip                                   | 620    | (280)       |                    |                    | 1                  |                   |
| Approx. Total Shipping Weight             |        | lbs<br>(kg) | 99,970<br>(45,350) | 37,920<br>(17,190) | 42,810<br>(19,410) | 14,570<br>(6,610) |

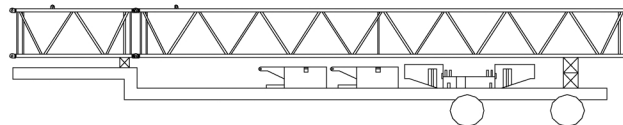
\* Third drum is not included.

Loads for transportation were targeted at 45,000 lbs, 8' 6" wide, 48' long and 13' 6" high from ground. This may vary depending on truck/trailer weight, style of trailer and state low.

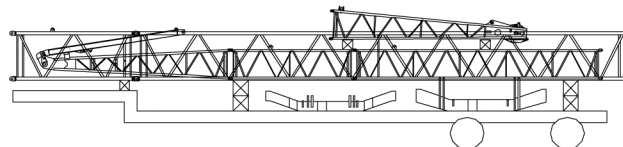
Trailer #1



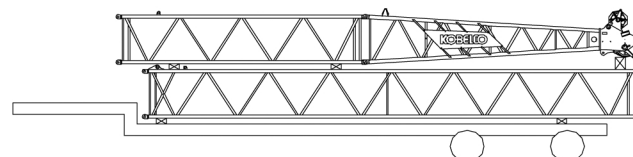
Trailer #2



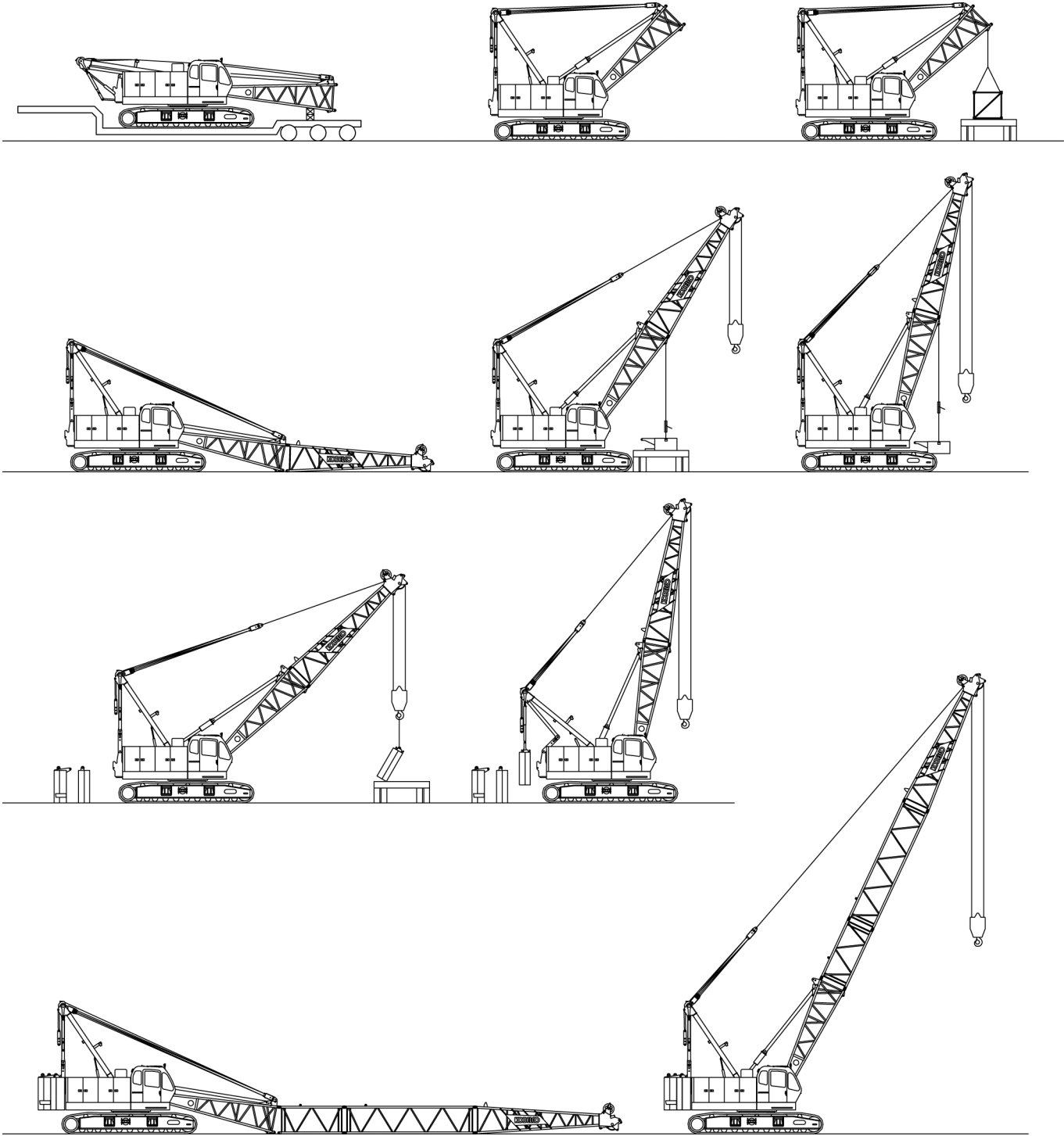
Trailer #3



Trailer #4

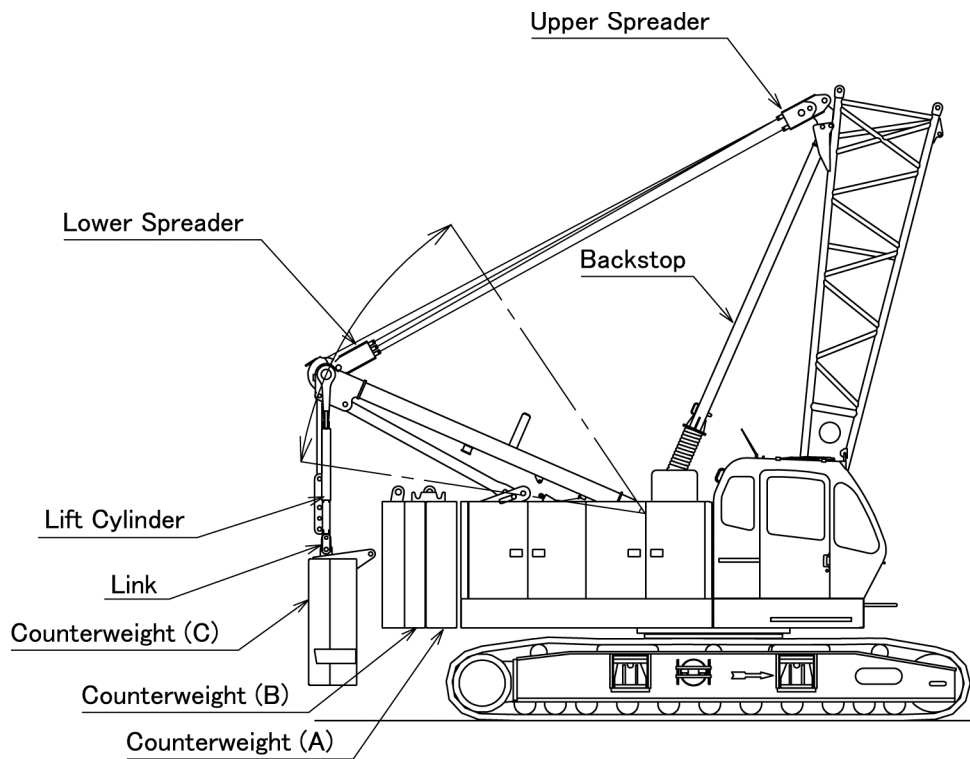


# CK1000-III Self Assembly Procedure **KOBELCO**



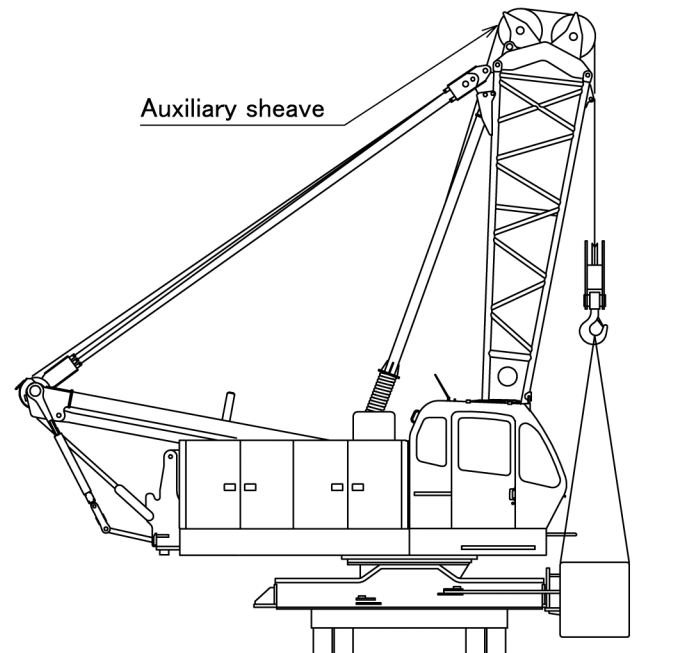
# CK1000-III Counterweight Self-Removal Device **KOBELCO**

(Standard equipment)



## Crawler Frame Self-Removal Device

(Optional equipment)



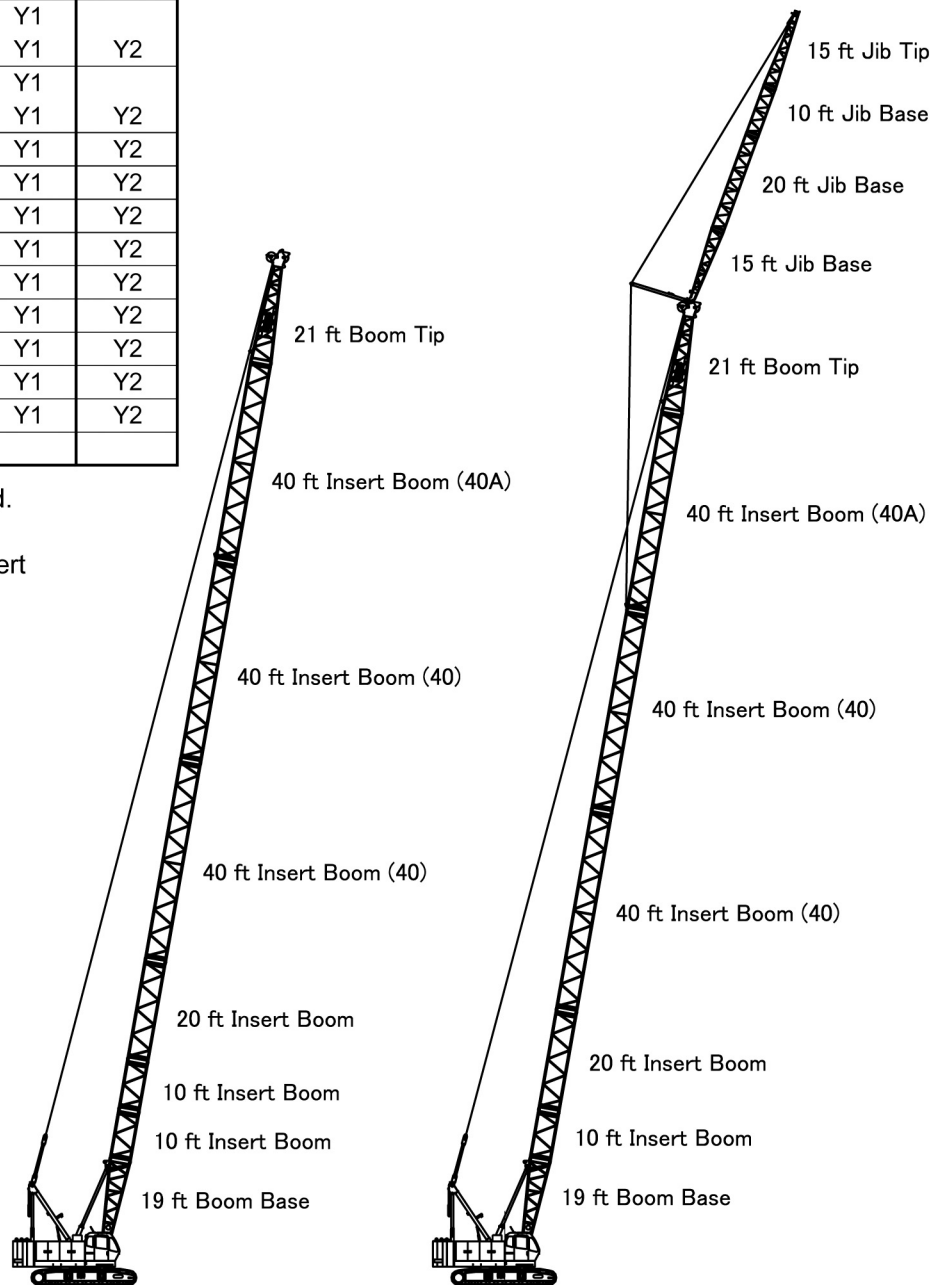
## Boom Arrangement

| Boom   | Insert Boom |       |           |             | Aux. Sheave | Fixed Jib |
|--------|-------------|-------|-----------|-------------|-------------|-----------|
|        | 10 ft       | 20 ft | 40ft (40) | 40 ft (40A) |             |           |
| 40 ft  | –           | –     | –         | –           | Y1          |           |
| 50 ft  | 1           | –     | –         | –           | Y1          |           |
| 60 ft  | 2           | –     | –         | –           | Y1          |           |
| 70 ft  | 1           | 1     | –         | –           | Y1          |           |
| 80 ft  | 2           | 1     | –         | –           | Y1          | Y2        |
|        | –           | –     | –         | 1           | Y1          |           |
| 90 ft  | 1           | 2     | –         | –           | Y1          | Y2        |
|        | 1           | –     | –         | 1           | Y1          |           |
| 100 ft | 2           | 2     | –         | –           | Y1          | Y2        |
|        | 2           | –     | –         | 1           | Y1          |           |
| 110 ft | 1           | 1     | –         | 1           | Y1          | Y2        |
| 120 ft | 2           | 1     | –         | 1           | Y1          | Y2        |
| 130 ft | 1           | 2     | –         | 1           | Y1          | Y2        |
| 140 ft | 2           | 2     | –         | 1           | Y1          | Y2        |
| 150 ft | 1           | 1     | 1         | 1           | Y1          | Y2        |
| 160 ft | 2           | 1     | 1         | 1           | Y1          | Y2        |
| 170 ft | 1           | 2     | 1         | 1           | Y1          | Y2        |
| 180 ft | 2           | 2     | 1         | 1           | Y1          | Y2        |
| 190 ft | 1           | 1     | 2         | 1           | Y1          | Y2        |
| 200 ft | 2           | 1     | 2         | 1           |             |           |

## Jib Arrangement

| Jib   | Insert Jib |       |
|-------|------------|-------|
|       | 10 ft      | 20 ft |
| 30 ft | –          | –     |
| 40 ft | 1          | –     |
| 50 ft | –          | 1     |
| 60 ft | 1          | 1     |

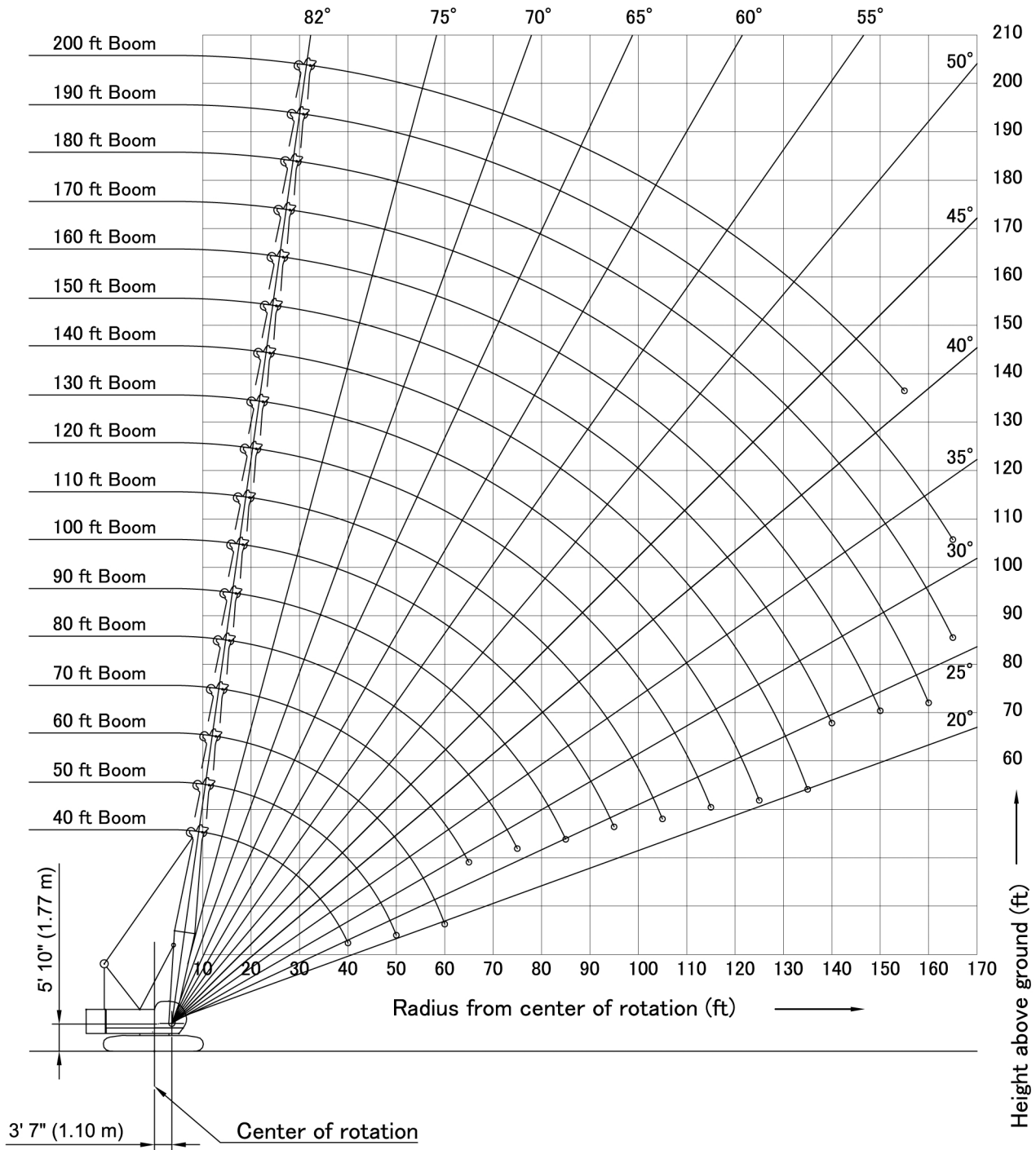
Y1: Auxiliary sheave can be attached.  
 Y2: Fixed jib can be attached.  
 To install fixed jib, one 40A (40 ft insert boom with lug) is required.



200 ft (61.0 m) Main Boom

190 ft (57.9 m) Main Boom and 60 ft (18.3 m) Fixed Jib

# CK1000-III Main Boom Working Range **KOBELCO**

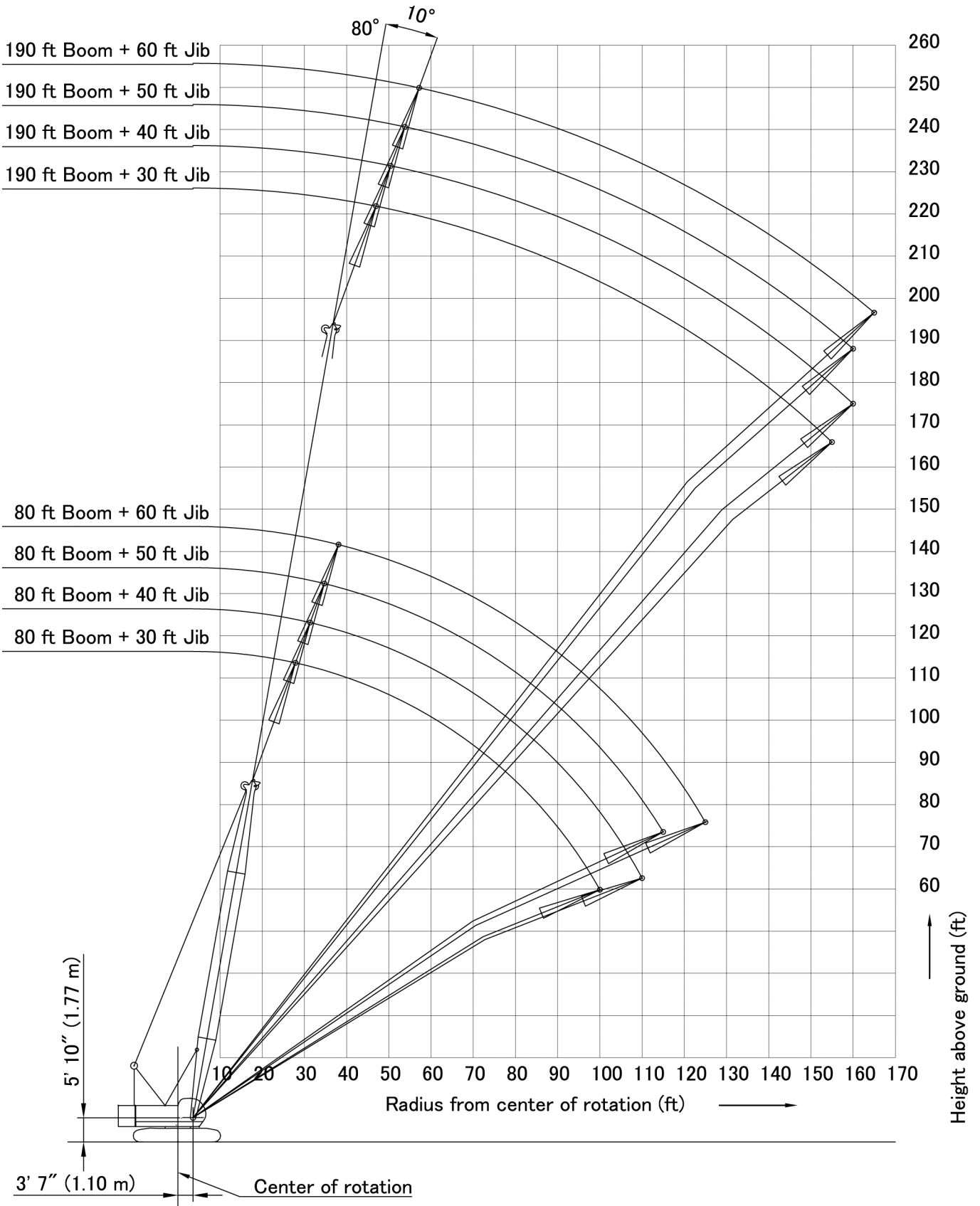




# CK1000-III Jib Working Range



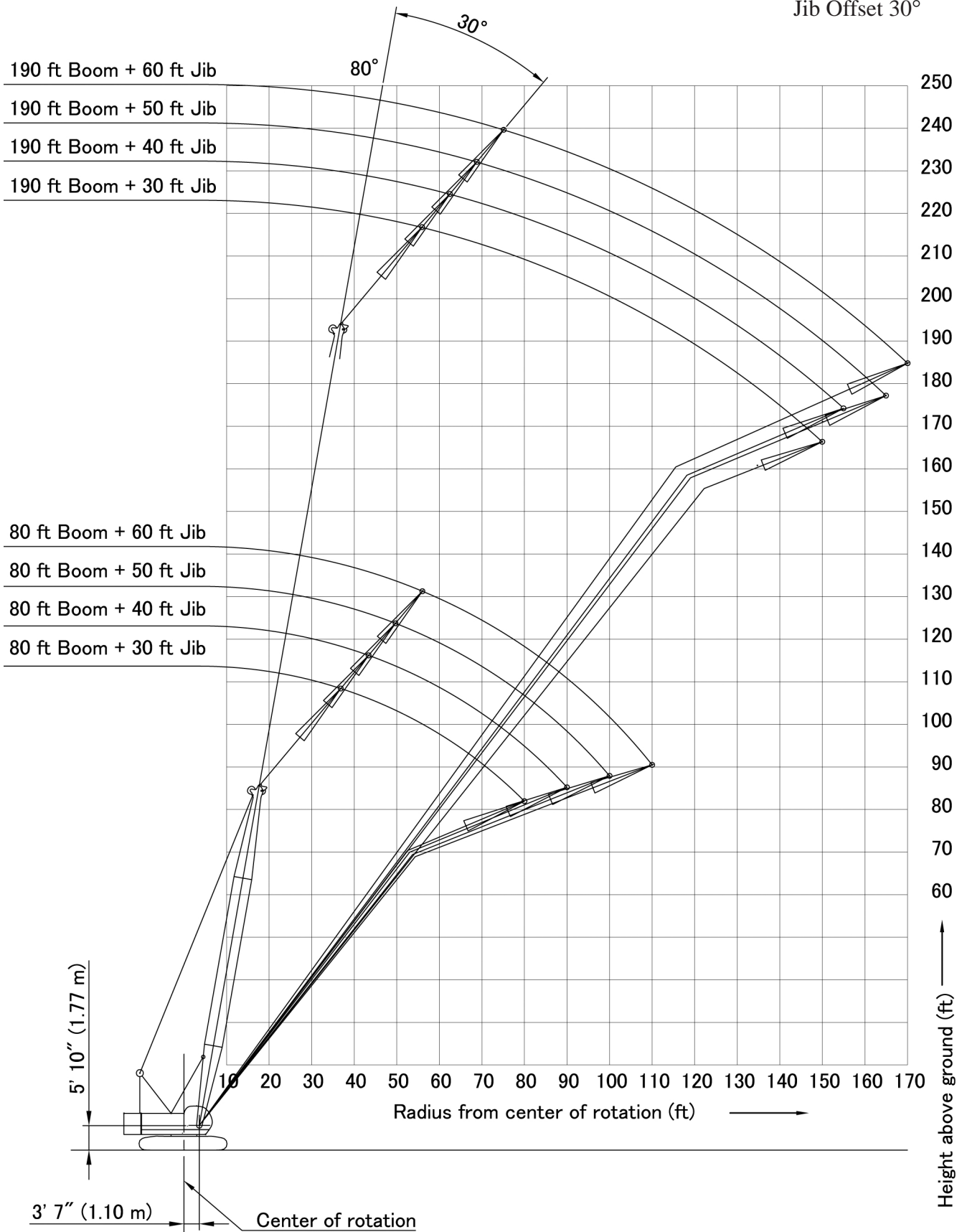
Jib Offset 10°



# CK1000-III Jib Working Range



Jib Offset 30°



# KOBELCO CK1000-III Main Boom Rated Loads in Pounds

Counterweight: 63,490 lbs (28,790 kg)

Carbody weight: 16,100 lbs (7,300 kg)

## Supplemental Data

1. Rated loads included in the charts are the maximum allowable freely suspended loads at a given boom length, boom angle and load radius, and have been determined for the machine standing level on firm supporting surface under ideal operating conditions. The user must limit or de-rate rated loads to allow for adverse conditions (such as soft or uneven ground, out-of-level conditions, wind, side loads, pendulum action, jerking or sudden stopping of loads, inexperience of personnel, multiple machine lifts, and traveling with a load).
2. Rated loads do not exceed 75% of minimum tipping loads. Rated loads based on factors other than machine stability such as structural competence are shown by asterisk \* in the charts.
3. The machine must be reeved and set-up as stated in the operation manual and all the instruction manuals if these manuals are missing, obtain replacements.
  - 1) The crane must be leveled to within 1% on a firm supporting surface.
  - 2) Boom backstops are required for all boom lengths.
  - 3) Gantry must be fully raised position for all operations.
  - 4) Crawlers must be fully extended and be locked in position.
  - 5) Counterweight: 63,490 lbs.
  - 6) Carbody weight: 16,100 lbs
4. Do not attempt to lift where no radius on load is listed as crane may tip or collapse.
5. Attempting to lift more than rated loads may cause machine to tip or collapse. Do not tip machine to determine rated loads.
6. Weight of hooks, hook blocks, slings and other lifting devices are a part of the total load. Their total weight must be subtracted from the rated load to obtain the weight that can be lifted.
7. When lifting over boom point with jib or auxiliary sheave, rated loads for the boom must be deducted as shown below.
8. The total load that can be lifted by the jib is limited by rated jib loads.
9. Boom lengths for jib mounting are 80 ft (24.4 m) to 190 ft (57.9 m).
10. The total load that can be lifted by the auxiliary sheave is: the rated load for the boom (without auxiliary sheave installed) minus 420 lbs; however, the auxiliary sheave rated load should not exceed 24,000 lbs.
11. Permissible boom lengths for installing auxiliary sheave are from 40 ft (12.2 m) to 190 ft (57.9 m).
12. The boom should be erected over the front of the crawlers, not laterally.
13. Least stable position is over the side.
14. Maximum hoist load for number of reeving parts of line for hoist rope.
15. Rated loads listed apply only to the machine as originally manufactured and designed by KOBELCO CRANES CO.,LTD. Modifications to this machine or use of equipment other than that specified can reduce operating capacity.
16. Designed and rated to comply ANSI code B30.5.

| Jib Length   | Aux Sheave | 30 ft | 40 ft | 50 ft | 60 ft |
|--------------|------------|-------|-------|-------|-------|
| Deduct (lbs) | 420        | 2,400 | 3,200 | 4,200 | 5,200 |

### Maximum Load for Main Boom

| No. of Parts of line | 1      | 2      | 3      | 4       | 5       |
|----------------------|--------|--------|--------|---------|---------|
| Maximum Loads (lbs)  | 25,000 | 50,000 | 75,000 | 100,000 | 125,000 |

| No. of Parts of line | 6       | 7       | 8       |
|----------------------|---------|---------|---------|
| Maximum Loads (lbs)  | 150,000 | 175,000 | 200,000 |

### Maximum Load for Fixed Jib

| No. of Parts of line | 1      |
|----------------------|--------|
| Maximum Loads (lbs)  | 24,000 |

### Maximum Load Auxiliary Sheave

| No. of Parts of line | 1      |
|----------------------|--------|
| Maximum Loads (lbs)  | 24,000 |

Operation of this equipment in excess of rated loads or disregard of instruction void the warranty

# CK1000-III Main Boom Rated Loads in Pounds

3 Counterweights + 2 Low Weights - Crawlers fully extended

| 40' Boom         |                   |                       | 50' Boom         |                   |                       | 60' Boom         |                   |                       |
|------------------|-------------------|-----------------------|------------------|-------------------|-----------------------|------------------|-------------------|-----------------------|
| Load Radius (ft) | Boom Angle (deg.) | 360° Rated Load (lbs) | Load Radius (ft) | Boom Angle (deg.) | 360° Rated Load (lbs) | Load Radius (ft) | Boom Angle (deg.) | 360° Rated Load (lbs) |
| 10.0             | 81.9              | 200,000 *             | 12.0             | 81.2              | 185,180 *             | 13.0             | 81.7              | 171,730 *             |
| 11.0             | 80.5              | 200,000 *             | 13.0             | 80.1              | 171,950 *             | 14.0             | 80.8              | 159,830 *             |
| 12.0             | 79.0              | 185,400 *             | 14.0             | 78.9              | 160,050 *             | 15.0             | 79.8              | 149,910 *             |
| 13.0             | 77.5              | 172,170 *             | 15.0             | 77.7              | 150,130 *             | 16.0             | 78.8              | 140,650 *             |
| 14.0             | 76.1              | 160,270 *             | 16.0             | 76.5              | 140,870 *             | 17.0             | 77.8              | 132,930 *             |
| 15.0             | 74.6              | 150,350 *             | 17.0             | 75.4              | 133,150 *             | 18.0             | 76.9              | 124,330 *             |
| 16.0             | 73.1              | 141,090 *             | 18.0             | 74.2              | 125,880 *             | 19.0             | 75.9              | 116,180 *             |
| 17.0             | 71.5              | 133,370 *             | 19.0             | 73.0              | 119,040 *             | 20.0             | 74.9              | 109,120 *             |
| 18.0             | 70.0              | 126,100 *             | 20.0             | 71.7              | 111,330 *             | 22.0             | 72.9              | 97,000 *              |
| 19.0             | 68.5              | 119,040 *             | 22.0             | 69.3              | 98,760 *              | 24.0             | 70.9              | 87,300 *              |
| 20.0             | 66.9              | 111,110 *             | 24.0             | 66.8              | 87,520                | 26.0             | 68.8              | 77,600                |
| 22.0             | 63.7              | 97,440 *              | 26.0             | 64.3              | 77,820                | 28.0             | 66.8              | 69,880                |
| 24.0             | 60.5              | 86,420 *              | 28.0             | 61.7              | 70,100                | 30.0             | 64.6              | 63,490                |
| 26.0             | 57.1              | 76,940 *              | 30.0             | 59.0              | 63,710                | 32.0             | 62.5              | 58,200                |
| 28.0             | 53.5              | 69,000 *              | 32.0             | 56.3              | 58,420                | 34.0             | 60.3              | 53,570                |
| 30.0             | 49.8              | 62,160 *              | 34.0             | 53.5              | 53,790                | 36.0             | 58.1              | 49,600                |
| 32.0             | 45.9              | 55,990 *              | 36.0             | 50.5              | 50,040                | 38.0             | 55.8              | 46,070                |
| 34.0             | 41.7              | 50,260 *              | 38.0             | 47.4              | 46,510                | 40.0             | 53.4              | 43,210                |
| 36.0             | 37.0              | 45,190 *              | 40.0             | 44.2              | 43,430                | 45.0             | 47.1              | 37,030                |
| 38.0             | 31.8              | 40,120 *              | 45.0             | 35.0              | 35,270 *              | 50.0             | 40.1              | 32,400                |
| 40.0             | 25.7              | 35,270 *              | 50.0             | 22.8              | 27,110 *              | 55.0             | 31.8              | 27,330 *              |
|                  |                   |                       |                  |                   |                       | 60.0             | 20.7              | 21,600 *              |

| 70' Boom         |                   |                       | 80' Boom         |                   |                       | 90' Boom         |                   |                       |
|------------------|-------------------|-----------------------|------------------|-------------------|-----------------------|------------------|-------------------|-----------------------|
| Load Radius (ft) | Boom Angle (deg.) | 360° Rated Load (lbs) | Load Radius (ft) | Boom Angle (deg.) | 360° Rated Load (lbs) | Load Radius (ft) | Boom Angle (deg.) | 360° Rated Load (lbs) |
| 15.0             | 81.3              | 149,690 *             | 16.0             | 81.6              | 138,660 *             | 17.0             | 81.9              | 125,660 *             |
| 16.0             | 80.4              | 140,430 *             | 17.0             | 80.9              | 128,300 *             | 18.0             | 81.3              | 117,720 *             |
| 17.0             | 79.6              | 131,830 *             | 18.0             | 80.2              | 119,260 *             | 19.0             | 80.6              | 109,780 *             |
| 18.0             | 78.8              | 122,570 *             | 19.0             | 79.5              | 111,550 *             | 20.0             | 80.0              | 103,170 *             |
| 19.0             | 77.9              | 114,630 *             | 20.0             | 78.7              | 104,710 *             | 22.0             | 78.7              | 91,710 *              |
| 20.0             | 77.1              | 107,580 *             | 22.0             | 77.3              | 93,250 *              | 24.0             | 77.4              | 82,670 *              |
| 22.0             | 75.4              | 95,900 *              | 24.0             | 75.8              | 84,210 *              | 26.0             | 76.1              | 75,390 *              |
| 24.0             | 73.7              | 86,420 *              | 26.0             | 74.3              | 76,720 *              | 28.0             | 74.8              | 69,220 *              |
| 26.0             | 72.0              | 77,600                | 28.0             | 72.8              | 69,440                | 30.0             | 73.4              | 63,050                |
| 28.0             | 70.2              | 69,880                | 30.0             | 71.3              | 63,050                | 32.0             | 72.1              | 57,540                |
| 30.0             | 68.5              | 63,490                | 32.0             | 69.8              | 57,760                | 34.0             | 70.8              | 52,910                |
| 32.0             | 66.7              | 57,980                | 34.0             | 68.2              | 53,130                | 36.0             | 69.4              | 49,160                |
| 34.0             | 64.9              | 53,350                | 36.0             | 66.7              | 49,160                | 38.0             | 68.0              | 45,630                |
| 36.0             | 63.1              | 49,600                | 38.0             | 65.1              | 45,850                | 40.0             | 66.6              | 42,540                |
| 38.0             | 61.2              | 46,070                | 40.0             | 63.5              | 42,760                | 45.0             | 63.1              | 36,370                |
| 40.0             | 59.3              | 42,980                | 45.0             | 59.4              | 36,590                | 50.0             | 59.5              | 31,740                |
| 45.0             | 54.4              | 37,030                | 50.0             | 55.1              | 31,960                | 55.0             | 55.7              | 27,990                |
| 50.0             | 49.1              | 32,180                | 55.0             | 50.6              | 28,210                | 60.0             | 51.7              | 25,130                |
| 55.0             | 43.4              | 28,650                | 60.0             | 45.7              | 25,130                | 65.0             | 47.5              | 22,480                |
| 60.0             | 37.0              | 25,570                | 65.0             | 40.4              | 22,700                | 70.0             | 43.0              | 20,500                |
| 65.0             | 29.4              | 22,040 *              | 70.0             | 34.5              | 20,720                | 75.0             | 38.0              | 18,730                |
|                  |                   |                       | 75.0             | 27.4              | 17,850 *              | 80.0             | 32.4              | 17,190 *              |
|                  |                   |                       |                  |                   |                       | 85.0             | 25.8              | 14,770 *              |

# CK1000-III Main Boom Rated Loads in Pounds

3 Counterweights + 2 Low Weights - Crawlers fully extended

| 100' Boom        |                   |                       | 110' Boom        |                   |                       | 120' Boom        |                   |                       |
|------------------|-------------------|-----------------------|------------------|-------------------|-----------------------|------------------|-------------------|-----------------------|
| Load Radius (ft) | Boom Angle (deg.) | 360° Rated Load (lbs) | Load Radius (ft) | Boom Angle (deg.) | 360° Rated Load (lbs) | Load Radius (ft) | Boom Angle (deg.) | 360° Rated Load (lbs) |
| 19.0             | 81.6              | 107,360 *             | 20.0             | 81.8              | 100,300 *             | 22.0             | 81.6              | 87,080 *              |
| 20.0             | 81.0              | 100,750 *             | 22.0             | 80.8              | 89,060 *              | 24.0             | 80.6              | 78,480 *              |
| 22.0             | 79.8              | 89,500 *              | 24.0             | 79.7              | 80,020 *              | 26.0             | 79.6              | 71,200 *              |
| 24.0             | 78.7              | 80,680 *              | 26.0             | 78.7              | 72,750 *              | 28.0             | 78.6              | 65,250 *              |
| 26.0             | 77.5              | 73,410 *              | 28.0             | 77.6              | 66,790 *              | 30.0             | 77.7              | 60,180 *              |
| 28.0             | 76.3              | 67,460 *              | 30.0             | 76.5              | 61,720 *              | 32.0             | 76.7              | 55,990 *              |
| 30.0             | 75.1              | 62,390 *              | 32.0             | 75.4              | 57,310 *              | 34.0             | 75.7              | 52,240 *              |
| 32.0             | 73.9              | 57,310                | 34.0             | 74.4              | 52,680                | 36.0             | 74.7              | 48,500                |
| 34.0             | 72.7              | 52,680                | 36.0             | 73.3              | 48,720                | 38.0             | 73.7              | 44,970                |
| 36.0             | 71.5              | 48,720                | 38.0             | 72.2              | 45,410                | 40.0             | 72.7              | 42,100                |
| 38.0             | 70.3              | 45,410                | 40.0             | 71.1              | 42,320                | 45.0             | 70.2              | 35,930                |
| 40.0             | 69.1              | 42,320                | 45.0             | 68.3              | 36,150                | 50.0             | 67.6              | 31,080                |
| 45.0             | 66.0              | 36,150                | 50.0             | 65.5              | 31,520                | 55.0             | 65.0              | 27,330                |
| 50.0             | 62.8              | 31,520                | 55.0             | 62.6              | 27,770                | 60.0             | 62.3              | 24,470                |
| 55.0             | 59.5              | 27,770                | 60.0             | 59.6              | 24,690                | 65.0             | 59.6              | 21,820                |
| 60.0             | 56.1              | 24,690                | 65.0             | 56.5              | 22,260                | 70.0             | 56.8              | 19,840                |
| 65.0             | 52.6              | 22,260                | 70.0             | 53.3              | 20,060                | 75.0             | 53.9              | 18,070                |
| 70.0             | 48.8              | 20,060                | 75.0             | 49.9              | 18,290                | 80.0             | 50.8              | 16,530                |
| 75.0             | 44.9              | 18,290                | 80.0             | 46.4              | 16,750                | 85.0             | 47.7              | 15,210                |
| 80.0             | 40.6              | 16,750                | 85.0             | 42.7              | 15,430                | 90.0             | 44.3              | 13,880                |
| 85.0             | 36.0              | 15,430                | 90.0             | 38.6              | 14,320                | 95.0             | 40.8              | 13,000                |
| 90.0             | 30.7              | 14,320 *              | 95.0             | 34.2              | 13,220                | 100.0            | 36.9              | 12,120                |
| 95.0             | 24.4              | 12,340 *              | 100.0            | 29.2              | 12,120 *              | 105.0            | 32.7              | 11,240                |
|                  |                   |                       | 105.0            | 23.2              | 10,360 *              | 110.0            | 27.9              | 10,140 *              |
|                  |                   |                       |                  |                   |                       | 115.0            | 22.2              | 8,590 *               |

| 130' Boom        |                   |                       | 140' Boom        |                   |                       | 150' Boom        |                   |                       |
|------------------|-------------------|-----------------------|------------------|-------------------|-----------------------|------------------|-------------------|-----------------------|
| Load Radius (ft) | Boom Angle (deg.) | 360° Rated Load (lbs) | Load Radius (ft) | Boom Angle (deg.) | 360° Rated Load (lbs) | Load Radius (ft) | Boom Angle (deg.) | 360° Rated Load (lbs) |
| 24.0             | 81.3              | 71,860 *              | 24.0             | 81.9              | 61,720 *              | 26.0             | 81.7              | 52,680 *              |
| 26.0             | 80.4              | 70,980 *              | 26.0             | 81.1              | 60,840 *              | 28.0             | 80.9              | 51,800 *              |
| 28.0             | 79.5              | 65,030 *              | 28.0             | 80.3              | 59,960 *              | 30.0             | 80.2              | 51,140 *              |
| 30.0             | 78.6              | 59,960 *              | 30.0             | 79.4              | 58,640 *              | 32.0             | 79.4              | 50,260 *              |
| 32.0             | 77.7              | 55,550 *              | 32.0             | 78.6              | 54,450 *              | 34.0             | 78.6              | 49,600 *              |
| 34.0             | 76.8              | 51,800 *              | 34.0             | 77.8              | 50,700 *              | 36.0             | 77.8              | 46,510 *              |
| 36.0             | 75.9              | 48,500 *              | 36.0             | 76.9              | 47,390 *              | 38.0             | 77.0              | 43,650 *              |
| 38.0             | 75.0              | 44,970                | 38.0             | 76.1              | 44,530 *              | 40.0             | 76.3              | 41,220 *              |
| 40.0             | 74.1              | 41,880                | 40.0             | 75.2              | 41,660                | 45.0             | 74.3              | 35,270                |
| 45.0             | 71.8              | 35,710                | 45.0             | 73.1              | 35,490                | 50.0             | 72.3              | 30,640                |
| 50.0             | 69.4              | 31,080                | 50.0             | 71.0              | 30,860                | 55.0             | 70.3              | 26,890                |
| 55.0             | 67.1              | 27,330                | 55.0             | 68.8              | 27,110                | 60.0             | 68.2              | 23,800                |
| 60.0             | 64.6              | 24,250                | 60.0             | 66.6              | 24,030                | 65.0             | 66.1              | 21,380                |
| 65.0             | 62.2              | 21,820                | 65.0             | 64.3              | 21,380                | 70.0             | 64.0              | 19,180                |
| 70.0             | 59.6              | 19,620                | 70.0             | 62.0              | 19,400                | 75.0             | 61.9              | 17,410                |
| 75.0             | 57.0              | 17,850                | 75.0             | 59.7              | 17,630                | 80.0             | 59.7              | 15,870                |
| 80.0             | 54.4              | 16,310                | 80.0             | 57.2              | 16,090                | 85.0             | 57.4              | 14,550                |
| 85.0             | 51.6              | 14,990                | 85.0             | 54.8              | 14,770                | 90.0             | 55.1              | 13,440                |
| 90.0             | 48.7              | 13,880                | 90.0             | 52.2              | 13,440                | 95.0             | 52.8              | 12,340                |
| 95.0             | 45.7              | 12,780                | 95.0             | 49.6              | 12,560                | 100.0            | 50.3              | 11,460                |
| 100.0            | 42.5              | 11,900                | 100.0            | 46.8              | 11,460                | 105.0            | 47.8              | 10,580                |
| 105.0            | 39.1              | 11,020                | 105.0            | 43.9              | 10,800                | 110.0            | 45.1              | 9,700                 |
| 110.0            | 35.4              | 10,360                | 110.0            | 40.9              | 9,920                 | 115.0            | 42.3              | 9,030                 |
| 115.0            | 31.4              | 9,470 *               | 115.0            | 37.6              | 9,250                 | 120.0            | 39.4              | 8,590                 |
| 120.0            | 26.8              | 8,370 *               | 120.0            | 34.1              | 8,590                 | 125.0            | 36.3              | 7,930                 |
| 125.0            | 21.3              | 7,050 *               | 125.0            | 30.2              | 7,710 *               | 130.0            | 32.9              | 7,490 *               |
|                  |                   |                       | 130.0            | 25.8              | 6,830 *               | 135.0            | 29.1              | 6,610 *               |
|                  |                   |                       | 135.0            | 20.5              | 5,730 *               | 140.0            | 24.9              | 5,730 *               |

# CK1000-III Main Boom Rated Loads in Pounds

3 Counterweights + 2 Low Weights - Crawlers fully extended

| 160' Boom        |                   |                       | 170' Boom        |                   |                       | 180' Boom        |                   |                       |
|------------------|-------------------|-----------------------|------------------|-------------------|-----------------------|------------------|-------------------|-----------------------|
| Load Radius (ft) | Boom Angle (deg.) | 360° Rated Load (lbs) | Load Radius (ft) | Boom Angle (deg.) | 360° Rated Load (lbs) | Load Radius (ft) | Boom Angle (deg.) | 360° Rated Load (lbs) |
| 28.0             | 81.5              | 44,090 *              | 28.0             | 82.0              | 38,800 *              | 30.0             | 81.8              | 33,730 *              |
| 30.0             | 80.8              | 43,430 *              | 30.0             | 81.3              | 38,130 *              | 32.0             | 81.2              | 33,060 *              |
| 32.0             | 80.1              | 42,760 *              | 32.0             | 80.6              | 37,470 *              | 34.0             | 80.5              | 32,620 *              |
| 34.0             | 79.3              | 42,100 *              | 34.0             | 80.0              | 37,030 *              | 36.0             | 79.9              | 31,960 *              |
| 36.0             | 78.6              | 41,440 *              | 36.0             | 79.3              | 36,370 *              | 38.0             | 79.2              | 31,520 *              |
| 38.0             | 77.9              | 40,780 *              | 38.0             | 78.6              | 35,710 *              | 40.0             | 78.6              | 31,080 *              |
| 40.0             | 77.1              | 40,340 *              | 40.0             | 77.9              | 35,270 *              | 45.0             | 77.0              | 29,760 *              |
| 45.0             | 75.3              | 35,270                | 45.0             | 76.2              | 33,950 *              | 50.0             | 75.3              | 28,650 *              |
| 50.0             | 73.4              | 30,640                | 50.0             | 74.4              | 30,420                | 55.0             | 73.7              | 26,230                |
| 55.0             | 71.5              | 26,890                | 55.0             | 72.7              | 26,670                | 60.0             | 72.0              | 23,360                |
| 60.0             | 69.6              | 23,800                | 60.0             | 70.9              | 23,580                | 65.0             | 70.3              | 20,720                |
| 65.0             | 67.7              | 21,160                | 65.0             | 69.1              | 20,940                | 70.0             | 68.6              | 18,730                |
| 70.0             | 65.8              | 19,180                | 70.0             | 67.3              | 18,950                | 75.0             | 66.9              | 16,750                |
| 75.0             | 63.8              | 17,410                | 75.0             | 65.4              | 17,190                | 80.0             | 65.1              | 15,210                |
| 80.0             | 61.8              | 15,870                | 80.0             | 63.6              | 15,650                | 85.0             | 63.4              | 13,880                |
| 85.0             | 59.7              | 14,320                | 85.0             | 61.7              | 14,100                | 90.0             | 61.6              | 12,780                |
| 90.0             | 57.6              | 13,220                | 90.0             | 59.7              | 13,000                | 95.0             | 59.7              | 11,680                |
| 95.0             | 55.4              | 12,120                | 95.0             | 57.7              | 11,900                | 100.0            | 57.9              | 10,800                |
| 100.0            | 53.2              | 11,240                | 100.0            | 55.7              | 11,020                | 105.0            | 56.0              | 9,920                 |
| 105.0            | 51.0              | 10,360                | 105.0            | 53.6              | 10,140                | 110.0            | 54.0              | 9,030                 |
| 110.0            | 48.6              | 9,700                 | 110.0            | 51.5              | 9,470                 | 115.0            | 52.0              | 8,370                 |
| 115.0            | 46.2              | 9,030                 | 115.0            | 49.3              | 8,810                 | 120.0            | 50.0              | 7,710                 |
| 120.0            | 43.6              | 8,370                 | 120.0            | 47.1              | 8,150                 | 125.0            | 47.8              | 7,270                 |
| 125.0            | 40.9              | 7,710                 | 125.0            | 44.7              | 7,490                 | 130.0            | 45.6              | 6,830                 |
| 130.0            | 38.1              | 7,270                 | 130.0            | 42.2              | 7,050                 | 135.0            | 43.4              | 6,170                 |
| 135.0            | 35.1              | 6,830 *               | 135.0            | 39.6              | 6,610                 | 140.0            | 41.0              | 5,730                 |
| 140.0            | 31.8              | 5,950 *               | 140.0            | 36.9              | 6,170 *               | 145.0            | 38.5              | 5,290 *               |
| 145.0            | 28.2              | 5,290 *               | 145.0            | 34.0              | 5,510 *               | 150.0            | 35.8              | 4,850 *               |
| 150.0            | 24.1              | 4,400 *               | 150.0            | 30.8              | 4,850 *               | 155.0            | 33.0              | 4,180 *               |
|                  |                   |                       | 155.0            | 27.3              | 4,180 *               | 160.0            | 29.9              | 3,520 *               |
|                  |                   |                       | 160.0            | 23.3              | 3,520 *               | 165.0            | 26.5              | 3,080 *               |

| 190' Boom        |                   |                       | 200' Boom        |                   |                       |                  |                   |                       |
|------------------|-------------------|-----------------------|------------------|-------------------|-----------------------|------------------|-------------------|-----------------------|
| Load Radius (ft) | Boom Angle (deg.) | 360° Rated Load (lbs) | Load Radius (ft) | Boom Angle (deg.) | 360° Rated Load (lbs) | Load Radius (ft) | Boom Angle (deg.) | 360° Rated Load (lbs) |
| 32.0             | 81.6              | 29,540 *              | 155.0            | 37.4              | 4,180 *               | 34.0             | 81.5              | 25,790 *              |
| 34.0             | 81.0              | 28,880 *              | 160.0            | 34.8              | 3,740 *               | 36.0             | 80.9              | 25,350 *              |
| 36.0             | 80.4              | 28,430 *              | 165.0            | 32.1              | 3,300 *               | 38.0             | 80.3              | 24,910 *              |
| 38.0             | 79.8              | 27,990 *              |                  |                   |                       | 40.0             | 79.7              | 24,470 *              |
| 40.0             | 79.2              | 27,550 *              |                  |                   |                       | 45.0             | 78.3              | 23,360 *              |
| 45.0             | 77.6              | 26,450 *              |                  |                   |                       | 50.0             | 76.8              | 22,480 *              |
| 50.0             | 76.1              | 25,350 *              |                  |                   |                       | 55.0             | 75.3              | 21,380 *              |
| 55.0             | 74.5              | 24,250 *              |                  |                   |                       | 60.0             | 73.8              | 19,840 *              |
| 60.0             | 73.0              | 22,700 *              |                  |                   |                       | 65.0             | 72.3              | 18,510 *              |
| 65.0             | 71.4              | 20,500                |                  |                   |                       | 70.0             | 70.8              | 16,970 *              |
| 70.0             | 69.8              | 18,510                |                  |                   |                       | 75.0             | 69.3              | 15,650 *              |
| 75.0             | 68.2              | 16,750                |                  |                   |                       | 80.0             | 67.8              | 14,550 *              |
| 80.0             | 66.5              | 15,210                |                  |                   |                       | 85.0             | 66.2              | 13,440                |
| 85.0             | 64.9              | 13,660                |                  |                   |                       | 90.0             | 64.6              | 12,340                |
| 90.0             | 63.2              | 12,560                |                  |                   |                       | 95.0             | 63.0              | 11,240                |
| 95.0             | 61.5              | 11,460                |                  |                   |                       | 100.0            | 61.4              | 10,360                |
| 100.0            | 59.7              | 10,580                |                  |                   |                       | 105.0            | 59.8              | 9,470                 |
| 105.0            | 58.0              | 9,700                 |                  |                   |                       | 110.0            | 58.1              | 8,590                 |
| 110.0            | 56.2              | 9,030                 |                  |                   |                       | 115.0            | 56.4              | 7,930                 |
| 115.0            | 54.3              | 8,370                 |                  |                   |                       | 120.0            | 54.6              | 7,270                 |
| 120.0            | 52.5              | 7,710                 |                  |                   |                       | 125.0            | 52.9              | 6,610 *               |
| 125.0            | 50.5              | 7,050                 |                  |                   |                       | 130.0            | 51.0              | 5,950 *               |
| 130.0            | 48.5              | 6,610                 |                  |                   |                       | 135.0            | 49.2              | 5,290 *               |
| 135.0            | 46.5              | 6,170                 |                  |                   |                       | 140.0            | 47.2              | 4,620 *               |
| 140.0            | 44.4              | 5,730                 |                  |                   |                       | 145.0            | 45.2              | 4,180 *               |
| 145.0            | 42.1              | 5,290 *               |                  |                   |                       | 150.0            | 43.2              | 3,520 *               |
| 150.0            | 39.8              | 4,850 *               |                  |                   |                       | 155.0            | 41.0              | 3,080 *               |

# CK1000-III Jib Rated Loads in Pounds

3 Counterweights + 2 Low Weights - Crawlers fully extended

| 80' Boom          |              |          |              |          |              |          |              |         | 90' Boom          |              |          |              |          |              |          |              |         |
|-------------------|--------------|----------|--------------|----------|--------------|----------|--------------|---------|-------------------|--------------|----------|--------------|----------|--------------|----------|--------------|---------|
| Load Radius (ft.) | 30 ft Jib    |          | 40 ft Jib    |          | 50 ft Jib    |          | 60 ft Jib    |         | Load Radius (ft.) | 30 ft Jib    |          | 40 ft Jib    |          | 50 ft Jib    |          | 60 ft Jib    |         |
|                   | Offset Angle |          | Offset Angle |          | Offset Angle |          | Offset Angle |         |                   | Offset Angle |          | Offset Angle |          | Offset Angle |          | Offset Angle |         |
|                   | 10°          | 30°      | 10°          | 30°      | 10°          | 30°      | 10°          | 30°     |                   | 10°          | 30°      | 10°          | 30°      | 10°          | 30°      | 10°          | 30°     |
| 30                | 24,000 *     |          |              |          |              |          |              |         | 32                | 24,000 *     |          |              |          |              |          |              |         |
| 32                | 24,000 *     |          |              |          |              |          |              |         | 34                | 24,000 *     |          |              |          |              |          |              |         |
| 34                | 24,000 *     |          | 24,000 *     |          |              |          |              |         | 36                | 24,000 *     | 24,000 * |              |          |              |          |              |         |
| 36                | 24,000 *     |          | 24,000 *     |          |              |          |              |         | 38                | 24,000 *     | 24,000 * | 20,000 *     |          |              |          |              |         |
| 38                | 24,000 *     | 21,000 * | 24,000 *     |          | 20,000 *     |          |              |         | 40                | 24,000 *     | 21,000 * | 24,000 *     | 20,000 * |              |          |              |         |
| 40                | 24,000 *     | 21,000 * | 24,000 *     |          | 20,000 *     |          | 18,000 *     |         | 45                | 24,000 *     | 21,000 * | 24,000 *     | 20,000 * |              | 18,000 * |              |         |
| 45                | 24,000 *     | 20,700 * | 24,000 *     | 15,360 * | 20,000 *     |          | 18,000 *     |         | 50                | 24,000 *     | 20,100 * | 24,000 *     | 14,810 * | 20,000 *     |          | 18,000 *     |         |
| 50                | 24,000 *     | 19,510 * | 24,000 *     | 14,480 * | 20,000 *     |          | 17,850 *     |         | 55                | 24,000 *     | 19,020 * | 23,890 *     | 14,020 * | 19,550 *     | 11,300 * | 16,970 *     |         |
| 55                | 24,000 *     | 18,380 * | 22,480 *     | 13,640 * | 18,560 *     | 11,080 * | 16,180 *     |         | 60                | 24,000 *     | 18,120 * | 22,020 *     | 13,330 * | 18,000 *     | 10,730 * | 15,630 *     | 9,100 * |
| 60                | 24,000 *     | 17,500 * | 20,700 *     | 12,980 * | 17,080 *     | 10,490 * | 14,850 *     | 8,950 * | 65                | 22,660 *     | 17,320 * | 20,410 *     | 12,760 * | 16,730 *     | 10,250 * | 14,460 *     | 8,660 * |
| 65                | 22,920 *     | 16,710 * | 19,180 *     | 12,360 * | 15,800 *     | 9,980 *  | 13,730 *     | 8,480 * | 70                | 20,540 *     | 16,620 * | 19,040 *     | 12,230 * | 15,580 *     | 9,780 *  | 13,470 *     | 8,240 * |
| 70                | 20,810 *     | 16,020 * | 17,870 *     | 11,830 * | 14,720 *     | 9,540 *  | 12,760 *     | 8,060 * | 75                | 18,620 *     | 15,960 * | 17,760 *     | 11,720 * | 14,520 *     | 9,360 *  | 12,520 *     | 7,870 * |
| 75                | 18,910 *     | 15,380 * | 16,660 *     | 11,350 * | 13,710 *     | 9,100 *  | 11,860 *     | 7,670 * | 80                | 17,080 *     | 15,430 * | 16,730 *     | 11,300 * | 13,660 *     | 8,990 *  | 11,770 *     | 7,530 * |
| 80                | 17,370 *     | 14,850 * | 15,670 *     | 10,930 * | 12,870 *     | 8,730 *  | 11,130 *     | 7,340 * | 85                | 15,760 *     | 14,940 * | 15,800 *     | 10,930 * | 12,890 *     | 8,680 *  | 11,080 *     | 7,230 * |
| 85                | 16,020 *     |          | 14,810 *     | 10,560 * | 12,140 *     | 8,420 *  | 10,470 *     | 7,030 * | 90                | 14,570 *     |          | 14,740 *     | 10,580 * | 12,210 *     | 8,370 *  | 10,470 *     | 6,960 * |
| 90                | 14,850 *     |          | 14,040 *     | 10,250 * | 11,500 *     | 8,130 *  | 9,870 *      | 6,760 * | 95                | 13,470 *     |          | 13,620 *     | 10,270 * | 11,570 *     | 8,110 *  | 9,890 *      | 6,700 * |
| 95                | 13,750 *     |          | 13,310 *     |          | 10,890 *     | 7,840 *  | 9,320 *      | 6,500 * | 100               | 12,540 *     |          | 12,690 *     |          | 11,020 *     | 7,870 *  | 9,390 *      | 6,480 * |
| 100               | 12,830 *     |          | 12,690 *     |          | 10,360 *     | 7,620 *  | 8,860 *      | 6,280 * | 105               | 11,700 *     |          | 11,860 *     |          | 10,530 *     | 7,640 *  | 8,950 *      | 6,280 * |
| 105               |              |          | 12,120 *     |          | 9,890 *      |          | 8,440 *      | 6,100 * | 110               |              |          | 11,080 *     |          | 10,070 *     |          | 8,550 *      | 6,100 * |
| 110               |              |          | 11,350 *     |          | 9,470 *      |          | 8,060 *      | 5,930 * | 115               |              |          | 10,360 *     |          | 9,650 *      |          | 8,150 *      | 5,930 * |
| 115               |              |          |              |          | 9,080 *      |          | 7,690 *      |         | 120               |              |          |              |          | 9,300 *      |          | 7,820 *      |         |
| 120               |              |          |              |          |              |          | 7,380 *      |         | 125               |              |          |              |          | 8,970 *      |          | 7,530 *      |         |
| 125               |              |          |              |          |              |          | 7,120 *      |         | 130               |              |          |              |          |              |          | 7,270 *      |         |
|                   |              |          |              |          |              |          |              |         | 135               |              |          |              |          |              |          | 7,010 *      |         |

| 100' Boom         |              |          |              |          |              |          |              |         | 110' Boom         |              |          |              |          |              |          |              |         |
|-------------------|--------------|----------|--------------|----------|--------------|----------|--------------|---------|-------------------|--------------|----------|--------------|----------|--------------|----------|--------------|---------|
| Load Radius (ft.) | 30 ft Jib    |          | 40 ft Jib    |          | 50 ft Jib    |          | 60 ft Jib    |         | Load Radius (ft.) | 30 ft Jib    |          | 40 ft Jib    |          | 50 ft Jib    |          | 60 ft Jib    |         |
|                   | Offset Angle |          | Offset Angle |          | Offset Angle |          | Offset Angle |         |                   | Offset Angle |          | Offset Angle |          | Offset Angle |          | Offset Angle |         |
|                   | 10°          | 30°      | 10°          | 30°      | 10°          | 30°      | 10°          | 30°     |                   | 10°          | 30°      | 10°          | 30°      | 10°          | 30°      | 10°          | 30°     |
| 32                | 24,000 *     |          |              |          |              |          |              |         | 34                | 24,000 *     |          |              |          |              |          |              |         |
| 34                | 24,000 *     |          |              |          |              |          |              |         | 36                | 24,000 *     |          |              |          |              |          |              |         |
| 36                | 24,000 *     |          | 24,000 *     |          |              |          |              |         | 38                | 24,000 *     | 24,000 * |              |          |              |          |              |         |
| 38                | 24,000 *     |          | 24,000 *     |          |              |          |              |         | 40                | 24,000 *     | 24,000 * |              |          |              |          |              |         |
| 40                | 24,000 *     |          | 24,000 *     |          | 20,000 *     |          |              |         | 45                | 24,000 *     | 21,000 * | 24,000 *     |          | 20,000 *     |          | 18,000 *     |         |
| 45                | 24,000 *     | 21,000 * | 24,000 *     |          | 20,000 *     |          | 18,000 *     |         | 50                | 24,000 *     | 21,000 * | 24,000 *     | 15,360 * | 20,000 *     |          | 18,000 *     |         |
| 50                | 24,000 *     | 20,650 * | 24,000 *     | 15,100 * | 20,000 *     |          | 18,000 *     |         | 55                | 24,000 *     | 20,100 * | 24,000 *     | 14,610 * | 20,000 *     |          | 18,000 *     |         |
| 55                | 24,000 *     | 19,570 * | 24,000 *     | 14,320 * | 20,000 *     | 11,500 * | 17,720 *     |         | 60                | 24,000 *     | 19,220 * | 24,000 *     | 13,970 * | 19,810 *     | 11,150 * | 17,040 *     |         |
| 60                | 24,000 *     | 18,690 * | 23,280 *     | 13,660 * | 18,930 *     | 10,950 * | 16,350 *     |         | 65                | 22,260 *     | 18,430 * | 22,500 *     | 13,400 * | 18,430 *     | 10,670 * | 15,820 *     | 8,970 * |
| 65                | 22,440 *     | 17,900 * | 21,620 *     | 13,090 * | 17,590 *     | 10,470 * | 15,160 *     | 8,810 * | 70                | 20,150 *     | 17,700 * | 20,370 *     | 12,870 * | 17,230 *     | 10,250 * | 14,770 *     | 8,570 * |
| 70                | 20,320 *     | 17,190 * | 20,190 *     | 12,560 * | 16,420 *     | 10,030 * | 14,130 *     | 8,420 * | 75                | 18,230 *     | 17,040 * | 18,450 *     | 12,380 * | 16,110 *     | 9,830 *  | 13,800 *     | 8,200 * |
| 75                | 18,400 *     | 16,510 * | 18,620 *     | 12,050 * | 15,340 *     | 9,610 *  | 13,160 *     | 8,040 * | 80                | 16,680 *     | 16,460 * | 16,880 *     | 11,940 * | 15,160 *     | 9,470 *  | 12,960 *     | 7,890 * |
| 80                | 16,860 *     | 15,960 * | 17,060 *     | 11,640 * | 14,440 *     | 9,230 *  | 12,360 *     | 7,710 * | 85                | 15,340 *     | 15,650 * | 15,520 *     | 11,570 * | 14,350 *     | 9,140 *  | 12,230 *     | 7,580 * |
| 85                | 15,520 *     | 15,450 * | 15,710 *     | 11,260 * | 13,640 *     | 8,920 *  | 11,660 *     | 7,420 * | 90                | 14,150 *     | 14,440 * | 14,320 *     | 11,220 * | 13,600 *     | 8,840 *  | 11,590 *     | 7,310 * |
| 90                | 14,320 *     | 14,570 * | 14,500 *     | 10,910 * | 12,910 *     | 8,610 *  | 11,040 *     | 7,160 * | 95                | 13,020 *     | 13,270 * | 13,200 *     | 10,890 * | 12,890 *     | 8,550 *  | 10,950 *     | 7,050 * |
| 95                | 13,220 *     | 13,420 * | 13,380 *     | 10,580 * | 12,230 *     | 8,330 *  | 10,420 *     | 6,900 * | 100               | 12,100 *     | 12,320 * | 12,250 *     | 10,600 * | 12,300 *     | 8,310 *  | 10,420 *     | 6,830 * |
| 100               | 12,270 *     |          | 12,450 *     | 10,310 * | 11,660 *     | 8,090 *  | 9,920 *      | 6,670 * | 105               | 11,260 *     |          | 11,410 *     | 10,330 * | 11,530 *     | 8,090 *  | 9,940 *      | 6,630 * |
| 105               | 11,460 *     |          | 11,590 *     |          | 11,150 *     | 7,870 *  | 9,450 *      | 6,450 * | 110               | 10,510 *     |          | 10,640 *     | 10,110 * | 10,780 *     | 7,890 *  | 9,500 *      | 6,430 * |
| 110               | 10,690 *     |          | 10,840 *     |          | 10,670 *     | 7,690 *  | 9,030 *      | 6,280 * | 115               | 9,780 *      |          | 9,920 *      |          | 10,030 *     | 7,690 *  | 9,080 *      | 6,260 * |
| 115               | 9,980 *      |          | 10,110 *     |          | 10,200 *     |          | 8,610 *      | 6,100 * | 120               | 9,170 *      |          | 9,300 *      |          | 9,390 *      |          | 8,700 *      | 6,100 * |
| 120               |              |          | 9,470 *      |          | 9,590 *      |          | 8,280 *      | 5,950 * | 125               | 8,420 *      |          | 8,730 *      |          | 8,810 *      |          | 8,370 *      | 5,970 * |
| 125               |              |          | 8,860 *      |          | 9,010 *      |          | 7,950 *      |         | 130               |              |          | 8,200 *      |          | 8,280 *      |          | 8,060 *      |         |
| 130               |              |          |              |          | 8,480 *      |          | 7,670 *      |         | 135               |              |          | 7,420 *      |          | 7,800 *      |          | 7,780 *      |         |
| 135               |              |          |              |          | 7,800 *      |          | 7,400 *      |         | 140               |              |          |              |          | 7,250 *      |          | 7,380 *      |         |
| 140               |              |          |              |          |              |          | 7,140 *      |         | 145               |              |          |              |          |              |          | 6,960 *      |         |
| 145               |              |          |              |          |              |          | 6,810 *      |         | 150               |              |          |              |          |              |          | 6,370 *      |         |

# CK1000-III Jib Rated Loads in Pounds

3 Counterweights + 2 Low Weights - Crawlers fully extended

| 120' Boom         |              |          |              | 130' Boom |              |          |              | 140' Boom |                   |              |          | 150' Boom    |          |              |          |              |         |
|-------------------|--------------|----------|--------------|-----------|--------------|----------|--------------|-----------|-------------------|--------------|----------|--------------|----------|--------------|----------|--------------|---------|
| Load Radius (ft.) | 30 ft Jib    |          | 40 ft Jib    |           | 50 ft Jib    |          | 60 ft Jib    |           | Load Radius (ft.) | 30 ft Jib    |          | 40 ft Jib    |          | 50 ft Jib    |          | 60 ft Jib    |         |
|                   | Offset Angle |          | Offset Angle |           | Offset Angle |          | Offset Angle |           |                   | Offset Angle |          | Offset Angle |          | Offset Angle |          | Offset Angle |         |
|                   | 10°          | 30°      | 10°          | 30°       | 10°          | 30°      | 10°          | 30°       |                   | 10°          | 30°      | 10°          | 30°      | 10°          | 30°      | 10°          | 30°     |
| 36                | 24,000 *     |          |              |           |              |          |              |           | 38                | 24,000 *     |          |              |          |              |          |              |         |
| 38                | 24,000 *     |          |              |           |              |          |              |           | 40                | 24,000 *     |          |              |          |              |          |              |         |
| 40                | 24,000 *     |          | 24,000 *     |           |              |          |              |           | 45                | 24,000 *     | 24,000 * |              | 20,000 * |              |          |              |         |
| 45                | 24,000 *     | 21,000 * | 24,000 *     |           | 20,000 *     |          |              |           | 50                | 24,000 *     | 21,000 * | 24,000 *     |          | 20,000 *     |          | 18,000 *     |         |
| 50                | 24,000 *     | 21,000 * | 24,000 *     |           | 20,000 *     |          | 18,000 *     |           | 55                | 24,000 *     | 20,980 * | 24,000 *     | 15,100 * | 20,000 *     |          | 18,000 *     |         |
| 55                | 24,000 *     | 20,560 * | 24,000 *     | 14,880 *  | 20,000 *     |          | 18,000 *     |           | 60                | 24,000 *     | 20,120 * | 24,000 *     | 14,500 * | 20,000 *     | 11,480 * | 18,000 *     |         |
| 60                | 24,000 *     | 19,680 * | 24,000 *     | 14,240 *  | 20,000 *     | 11,330 * | 17,720 *     |           | 65                | 21,730       | 19,350 * | 22,000       | 13,930 * | 20,010 *     | 11,020 * | 17,100 *     |         |
| 65                | 21,970       | 18,910 * | 22,240       | 13,690 *  | 19,240 *     | 10,860 * | 16,460 *     | 9,080 *   | 70                | 19,620       | 18,650 * | 19,860       | 13,420 * | 18,760 *     | 10,620 * | 16,000 *     | 8,840 * |
| 70                | 19,860       | 18,180 * | 20,100       | 13,160 *  | 18,010 *     | 10,420 * | 15,380 *     | 8,700 *   | 75                | 17,680       | 17,960 * | 17,920       | 12,940 * | 17,570 *     | 10,200 * | 14,960 *     | 8,480 * |
| 75                | 17,940       | 17,500 * | 18,160       | 12,670 *  | 16,840 *     | 10,030 * | 14,390 *     | 8,350 *   | 80                | 16,130       | 16,600   | 16,350       | 12,520 * | 16,530       | 9,850 *  | 14,100 *     | 8,170 * |
| 80                | 16,400       | 16,790   | 16,620       | 12,250 *  | 15,890 *     | 9,670 *  | 13,550 *     | 8,040 *   | 85                | 14,790       | 15,180   | 14,990       | 12,140 * | 15,160       | 9,540 *  | 13,330 *     | 7,890 * |
| 85                | 15,050       | 15,410   | 15,250       | 11,860 *  | 15,030 *     | 9,340 *  | 12,780 *     | 7,730 *   | 90                | 13,600       | 13,950   | 13,800       | 11,770 * | 13,950       | 9,230 *  | 12,630 *     | 7,620 * |
| 90                | 13,860       | 14,170   | 14,040       | 11,500 *  | 14,190       | 9,060 *  | 12,120 *     | 7,470 *   | 95                | 12,470       | 12,780   | 12,650       | 11,440 * | 12,800       | 8,950 *  | 11,970 *     | 7,360 * |
| 95                | 12,740       | 13,020   | 12,910       | 11,170 *  | 13,050       | 8,770 *  | 11,480 *     | 7,230 *   | 100               | 11,530       | 11,810   | 11,700       | 11,130 * | 11,860       | 8,700 *  | 11,410 *     | 7,140 * |
| 100               | 11,790       | 12,050   | 11,970       | 10,860 *  | 12,100       | 8,500 *  | 10,930 *     | 7,010 *   | 105               | 10,690       | 10,950   | 10,860       | 10,860 * | 11,000       | 8,480 *  | 10,890 *     | 6,940 * |
| 105               | 10,950       | 11,170   | 11,130       | 10,600 *  | 11,260       | 8,280 *  | 10,420 *     | 6,790 *   | 110               | 9,940        | 10,160   | 10,090       | 10,420   | 10,220       | 8,260 *  | 10,310       | 6,740 * |
| 110               | 10,200       |          | 10,360       | 10,360 *  | 10,490       | 8,060 *  | 9,960 *      | 6,610 *   | 115               | 9,210        |          | 9,360        | 9,650    | 9,470        | 8,040 *  | 9,560        | 6,560 * |
| 115               | 9,470        |          | 9,630        | 9,870     | 9,740        | 7,870 *  | 9,520 *      | 6,410 *   | 120               | 8,570        |          | 8,730        | 8,990    | 8,840        | 7,870 *  | 8,920        | 6,390 * |
| 120               | 8,860        |          | 8,990        |           | 9,100        | 7,690 *  | 9,140 *      | 6,260 *   | 125               | 8,020        |          | 8,150        |          | 8,260        | 7,710 *  | 8,350        | 6,230 * |
| 125               | 8,280        |          | 8,420        |           | 8,530        | 7,530 *  | 8,610        | 6,100 *   | 130               | 7,490        |          | 7,620        |          | 7,730        | 7,560 *  | 7,820        | 6,100 * |
| 130               | 7,690 *      |          | 7,890        |           | 8,000        |          | 8,060        | 5,970 *   | 135               | 6,940 *      |          | 7,140        |          | 7,250        |          | 7,310        | 5,970 * |
| 135               | 6,830 *      |          | 7,420        |           | 7,510        |          | 7,580        | 5,860 *   | 140               | 6,150 *      |          | 6,670        |          | 6,760        |          | 6,830        | 5,860 * |
| 140               |              |          | 6,700 *      |           | 7,030        |          | 7,090        |           | 145               |              |          | 6,040 *      |          | 6,340        |          | 6,410        |         |
| 145               |              |          |              |           | 6,540 *      |          | 6,670        |           | 150               |              |          | 5,370 *      |          | 5,860 *      |          | 6,040        |         |
| 150               |              |          |              |           | 5,880 *      |          | 6,300        |           | 155               |              |          |              |          | 5,260 *      |          | 5,620 *      |         |
| 155               |              |          |              |           |              |          | 5,730 *      |           | 160               |              |          |              |          | 4,650 *      |          | 5,040 *      |         |
| 160               |              |          |              |           |              |          | 5,090 *      |           | 165               |              |          |              |          |              |          | 4,540 *      |         |
|                   |              |          |              |           |              |          |              |           | 170               |              |          |              |          |              |          | 4,010 *      |         |



# CK1000-III Jib Rated Loads in Pounds

3 Counterweights + 2 Low Weights - Crawlers fully extended

| 160' Boom         |              |          |              |          |              |          |              |         | 170' Boom         |              |          |              |          |              |          |              |         |
|-------------------|--------------|----------|--------------|----------|--------------|----------|--------------|---------|-------------------|--------------|----------|--------------|----------|--------------|----------|--------------|---------|
| Load Radius (ft.) | 30 ft Jib    |          | 40 ft Jib    |          | 50 ft Jib    |          | 60 ft Jib    |         | Load Radius (ft.) | 30 ft Jib    |          | 40 ft Jib    |          | 50 ft Jib    |          | 60 ft Jib    |         |
|                   | Offset Angle |          | Offset Angle |          | Offset Angle |          | Offset Angle |         |                   | Offset Angle |          | Offset Angle |          | Offset Angle |          | Offset Angle |         |
|                   | 10°          | 30°      | 10°          | 30°      | 10°          | 30°      | 10°          | 30°     |                   | 10°          | 30°      | 10°          | 30°      | 10°          | 30°      | 10°          | 30°     |
| 45                | 24,000 *     |          |              |          |              |          |              |         | 45                | 24,000 *     |          |              |          |              |          |              |         |
| 50                | 24,000 *     |          | 24,000 *     |          |              |          |              |         | 50                | 24,000 *     |          | 24,000 *     |          |              |          |              |         |
| 55                | 24,000 *     | 21,000 * | 24,000 *     |          | 20,000 *     |          | 18,000 *     |         | 55                | 24,000 *     | 21,000 * | 24,000 *     |          | 20,000 *     |          | 18,000 *     |         |
| 60                | 23,720       | 21,000 * | 24,000 *     | 15,120 * | 20,000 *     |          | 18,000 *     |         | 60                | 23,500       | 21,000 * | 23,800       | 15,290 * | 20,000 *     |          | 18,000 *     |         |
| 65                | 21,180       | 20,500 * | 21,470       | 14,590 * | 20,000 *     | 11,440 * | 18,000 *     |         | 65                | 20,940       | 20,830 * | 21,250       | 14,770 * | 20,000 *     |          | 18,000 *     |         |
| 70                | 19,040       | 19,730   | 19,310       | 14,100 * | 19,530       | 11,060 * | 17,650 *     | 9,140 * | 70                | 18,820       | 19,530   | 19,090       | 14,300 * | 19,310       | 11,170 * | 18,000 *     |         |
| 75                | 17,100       | 17,720   | 17,370       | 13,640 * | 17,570       | 10,670 * | 16,570 *     | 8,810 * | 75                | 16,880       | 17,520   | 17,150       | 13,840 * | 17,350       | 10,800 * | 17,080 *     | 8,900 * |
| 80                | 15,540       | 16,090   | 15,780       | 13,220 * | 15,980       | 10,330 * | 15,670 *     | 8,530 * | 80                | 15,320       | 15,890   | 15,560       | 13,420 * | 15,760       | 10,490 * | 15,890       | 8,610 * |
| 85                | 14,190       | 14,680   | 14,410       | 12,850 * | 14,590       | 10,030 * | 14,700       | 8,240 * | 85                | 13,950       | 14,480   | 14,170       | 13,050 * | 14,370       | 10,180 * | 14,500       | 8,350 * |
| 90                | 12,980       | 13,440   | 13,200       | 12,500 * | 13,350       | 9,740 *  | 13,490       | 8,000 * | 90                | 12,740       | 13,240   | 12,960       | 12,690 * | 13,130       | 9,890 *  | 13,270       | 8,110 * |
| 95                | 11,860       | 12,270   | 12,050       | 12,140 * | 12,210       | 9,450 *  | 12,340       | 7,760 * | 95                | 11,610       | 12,050   | 11,810       | 12,360 * | 11,990       | 9,610 *  | 12,100       | 7,870 * |
| 100               | 10,910       | 11,280   | 11,110       | 11,640 * | 11,260       | 9,210 *  | 11,370       | 7,530 * | 100               | 10,670       | 11,080   | 10,860       | 11,440   | 11,020       | 9,360 *  | 11,150       | 7,640 * |
| 105               | 10,070       | 10,400   | 10,250       | 10,730   | 10,400       | 8,970 *  | 10,490       | 7,310 * | 105               | 9,810        | 10,200   | 10,000       | 10,530   | 10,160       | 9,120 *  | 10,270       | 7,450 * |
| 110               | 9,300        | 9,610    | 9,470        | 9,920    | 9,610        | 8,770 *  | 9,720        | 7,140 * | 110               | 9,060        | 9,390    | 9,230        | 9,720    | 9,390        | 8,900 *  | 9,470        | 7,250 * |
| 115               | 8,550        | 8,840    | 8,730        | 9,120    | 8,860        | 8,550 *  | 8,970        | 6,940 * | 115               | 8,310        | 8,610    | 8,480        | 8,920    | 8,610        | 8,680 *  | 8,730        | 7,050 * |
| 120               | 7,930        | 8,200    | 8,090        | 8,460    | 8,220        | 8,350 *  | 8,310        | 6,790 * | 120               | 7,670        | 7,980    | 7,840        | 8,240    | 7,980        | 8,500    | 8,090        | 6,900 * |
| 125               | 7,360        | 7,580    | 7,510        | 7,840    | 7,620        | 8,090    | 7,730        | 6,610 * | 125               | 7,090        | 7,360    | 7,270        | 7,640    | 7,400        | 7,890    | 7,490        | 6,740 * |
| 130               | 6,830        | 7,030    | 6,960        | 7,270    | 7,090        | 7,510    | 7,180        | 6,480 * | 130               | 6,560        | 6,810    | 6,720        | 7,070    | 6,850        | 7,310    | 6,940        | 6,590 * |
| 135               | 6,320        |          | 6,480        | 6,760    | 6,590        | 6,980    | 6,670        | 6,340 * | 135               | 6,080        | 6,300    | 6,230        | 6,540    | 6,340        | 6,760    | 6,450        | 6,450 * |
| 140               | 5,860        |          | 5,990        | 6,260    | 6,100        | 6,450    | 6,190        | 6,210 * | 140               | 5,590        |          | 5,750        | 6,040    | 5,860        | 6,260    | 5,950        | 6,300 * |
| 145               | 5,310 *      |          | 5,570        |          | 5,680        | 5,990    | 5,770        | 6,080 * | 145               | 5,040 *      |          | 5,290 *      | 5,590    | 5,440        | 5,790    | 5,530        | 5,970   |
| 150               | 4,760 *      |          | 5,090 *      |          | 5,290        | 5,570    | 5,370        | 5,750   | 150               | 4,540 *      |          | 4,780 *      |          | 4,960 *      | 5,370    | 5,070 *      | 5,550   |
| 155               | 4,230 *      |          | 4,580 *      |          | 4,800 *      |          | 4,960 *      | 5,350   | 155               | 4,030 *      |          | 4,320 *      |          | 4,490 *      | 4,930 *  | 4,620 *      | 5,150 * |
| 160               | 3,680 *      |          | 4,050 *      |          | 4,320 *      |          | 4,490 *      | 4,960   | 160               | 3,520 *      |          | 3,810 *      |          | 4,030 *      |          | 4,160 *      | 4,670 * |
| 165               | 3,170 *      |          | 3,590 *      |          | 3,880 *      |          | 4,050 *      |         | 165               | 3,040 *      |          | 3,370 *      |          | 3,610 *      |          | 3,760 *      | 4,250 * |
| 170               |              |          | 3,100 *      |          | 3,430 *      |          | 3,650 *      |         | 170               |              |          |              |          | 3,190 *      |          | 3,370 *      |         |
| 175               |              |          |              |          | 3,020 *      |          | 3,240 *      |         |                   |              |          |              |          |              |          |              |         |

| 180' Boom         |              |          |              |          |              |          |              |         | 190' Boom         |              |          |              |          |              |          |              |         |
|-------------------|--------------|----------|--------------|----------|--------------|----------|--------------|---------|-------------------|--------------|----------|--------------|----------|--------------|----------|--------------|---------|
| Load Radius (ft.) | 30 ft Jib    |          | 40 ft Jib    |          | 50 ft Jib    |          | 60 ft Jib    |         | Load Radius (ft.) | 30 ft Jib    |          | 40 ft Jib    |          | 50 ft Jib    |          | 60 ft Jib    |         |
|                   | Offset Angle |          | Offset Angle |          | Offset Angle |          | Offset Angle |         |                   | Offset Angle |          | Offset Angle |          | Offset Angle |          | Offset Angle |         |
|                   | 10°          | 30°      | 10°          | 30°      | 10°          | 30°      | 10°          | 30°     |                   | 10°          | 30°      | 10°          | 30°      | 10°          | 30°      | 10°          | 30°     |
| 50                | 22,200 *     |          |              |          |              |          |              |         | 50                | 22,200 *     |          |              |          |              |          |              |         |
| 55                | 21,750 *     | 21,000 * | 21,670 *     |          | 20,000 *     |          |              |         | 55                | 21,750 *     | 21,000 * | 21,670 *     |          | 20,000 *     |          |              |         |
| 60                | 21,360 *     | 20,870 * | 21,270 *     |          | 20,000 *     |          | 18,000 *     |         | 60                | 21,360 *     | 20,870 * | 21,270 *     |          | 20,000 *     |          | 18,000 *     |         |
| 65                | 20,700       | 20,500 * | 20,870 *     | 14,940 * | 20,000 *     |          | 18,000 *     |         | 65                | 20,700       | 20,500 * | 20,870 *     | 14,940 * | 20,000 *     |          | 18,000 *     |         |
| 70                | 18,560       | 19,310   | 18,840       | 14,480 * | 19,060 *     | 11,300 * | 18,000 *     |         | 70                | 18,560       | 19,310   | 18,840       | 14,480 * | 19,060 *     | 11,300 * | 18,000 *     |         |
| 75                | 16,600       | 17,300   | 16,880       | 14,020 * | 17,100       | 10,930 * | 17,230       | 8,990 * | 75                | 16,600       | 17,300   | 16,880       | 14,020 * | 17,100       | 10,930 * | 17,230       | 8,990 * |
| 80                | 15,030       | 15,670   | 15,290       | 13,620 * | 15,490       | 10,600 * | 15,650       | 8,700 * | 80                | 15,030       | 15,670   | 15,290       | 13,620 * | 15,490       | 10,600 * | 15,650       | 8,700 * |
| 85                | 13,660       | 14,240   | 13,910       | 13,240 * | 14,100       | 10,310 * | 14,240       | 8,460 * | 85                | 13,660       | 14,240   | 13,910       | 13,240 * | 14,100       | 10,310 * | 14,240       | 8,460 * |
| 90                | 12,470       | 13,000   | 12,690       | 12,890 * | 12,890       | 10,030 * | 13,020       | 8,200 * | 90                | 12,470       | 13,000   | 12,690       | 12,890 * | 12,890       | 10,030 * | 13,020       | 8,200 * |
| 95                | 11,330       | 11,810   | 11,550       | 12,210 * | 11,720       | 9,740 *  | 11,860       | 7,950 * | 95                | 11,330       | 11,810   | 11,550       | 12,210 * | 11,720       | 9,740 *  | 11,860       | 7,950 * |
| 100               | 10,380       | 10,820   | 10,600       | 11,190   | 10,750       | 9,500 *  | 10,890       | 7,760 * | 100               | 10,380       | 10,820   | 10,600       | 11,190   | 10,750       | 9,500 *  | 10,890       | 7,760 * |
| 105               | 9,540        | 9,940    | 9,740        | 10,290   | 9,890        | 9,280 *  | 10,000       | 7,530 * | 105               | 9,540        | 9,940    | 9,740        | 10,290   | 9,890        | 9,280 *  | 10,000       | 7,530 * |
| 110               | 8,770        | 9,140    | 8,970        | 9,470    | 9,100        | 9,060 *  | 9,230        | 7,360 * | 110               | 8,770        | 9,140    | 8,970        | 9,470    | 9,100        | 9,060 *  | 9,230        | 7,360 * |
| 115               | 8,020        | 8,370    | 8,200        | 8,680    | 8,350        | 8,840 *  | 8,460        | 7,160 * | 115               | 8,020        | 8,370    | 8,200        | 8,680    | 8,350        | 8,840 *  | 8,460        | 7,160 * |
| 120               | 7,380        | 7,710    | 7,560        | 8,000    | 7,710        | 8,280    | 7,820        | 7,010 * | 120               | 7,380        | 7,710    | 7,560        | 8,000    | 7,710        | 8,280    | 7,820        | 7,010 * |
| 125               | 6,810        | 7,090    | 6,980        | 7,380    | 7,120        | 7,640    | 7,230        | 6,850 * | 125               | 6,810        | 7,090    | 6,980        | 7,380    | 7,120        | 7,640    | 7,230        | 6,850 * |
| 130               | 6,280        | 6,540    | 6,430        | 6,830    | 6,560        | 7,070    | 6,670        | 6,700 * | 130               | 6,280        | 6,540    | 6,430        | 6,830    | 6,560        | 7,070    | 6,670        | 6,700 * |
| 135               | 5,770 *      | 6,040    | 5,950        | 6,300    | 6,080        | 6,540    | 6,150 *      | 6,540 * | 135               | 5,770 *      | 6,040    | 5,950        | 6,300    | 6,080        | 6,540    | 6,150 *      | 6,540 * |
| 140               | 5,180 *      | 5,480 *  | 5,370 *      | 5,770    | 5,510 *      | 6,010    | 5,590 *      | 6,210   | 140               | 5,180 *      | 5,480 *  | 5,370 *      | 5,770    | 5,510 *      | 6,010    | 5,590 *      | 6,210   |
| 145               | 4,650 *      | 4,960 *  | 4,870 *      | 5,260 *  | 5,020 *      | 5,510 *  | 5,110 *      | 5,700 * | 145               | 4,650 *      | 4,960 *  | 4,870 *      | 5,260 *  | 5,020 *      | 5,510 *  | 5,110 *      | 5,700 * |
| 150               | 4,160 *      |          | 4,380 *      | 4,760 *  | 4,540 *      | 5,020 *  | 4,620 *      | 5,220 * | 150               | 4,160 *      |          | 4,380 *      | 4,760 *  | 4,540 *      | 5,020 *  | 4,620 *      | 5,220 * |
| 155               | 3,680 *      |          | 3,920 *      |          | 4,100 *      | 4,560 *  | 4,210 *      | 4,760 * | 155               | 3,680 *      |          | 3,920 *      |          | 4,100 *      | 4,560 *  | 4,210 *      | 4,760 * |
| 160               | 3,210 *      |          | 3,460 *      |          | 3,630 *      | 4,070 *  | 3,760 *      | 4,290 * | 160               | 3,210 *      |          | 3,460 *      |          | 3,630 *      | 4,070 *  | 3,760 *      | 4,290 * |
| 165               |              |          | 3,040 *      |          | 3,240 *      |          | 3,370 *      | 3,880 * | 165               |              |          | 3,040 *      |          | 3,240 *      |          | 3,370 *      | 3,880 * |
| 170               |              |          |              |          |              |          | 3,480 *      |         | 170               |              |          |              |          |              |          | 3,480 *      |         |

**Boom:**

Welded lattice construction using tubular, high-tensile steel  
 Chords with pin connections between sections.  
 Basic boom length: 40 ft (12.2 m)  
 Max. boom length: 120 ft (36.6 m)  
 Limit on clamshell bucket weight: 4,600 lb (2,100 kg)  
 Optional tagline: hydraulic operated type and spring type

**Boom Component Chart**

| Boom length ft (m) | Boom arrangement                 |
|--------------------|----------------------------------|
| 40 (12.2)          | Base-Tip                         |
| 50 (15.2)          | Base-A-Tip                       |
| 60 (18.3)          | Base-A-A-Tip, Base-B-Tip         |
| 70 (21.3)          | Base-A-B-Tip                     |
| 80 (24.4)          | Base-A-A-B-Tip, Base-B-B-Tip     |
| 90 (27.4)          | Base-A-C-Tip                     |
| 100 (30.5)         | Base-A-A-B-B-Tip, Base-A-A-C-Tip |
| 110 (33.5)         | Base-A-B-C-Tip                   |
| 120 (36.6)         | Base-A-A-B-C-Tip, Base-B-B-C-Tip |

Base = Boom Base

Insert: A = 10 ft (3.05 m)  
 B = 20 ft (6.10 m)  
 C = 40 ft (12.2 m)

Tip = Boom Tip

1. Figures represent maximum allowable capacity, and assume level, ground and ideal working conditions.
2. Capacities are calculated at 66 % of the minimum tipping loads.
3. Capacities are maximum recommended by PCSA Standard #4. Allowances must be made by the user for such unfavorable conditions as a sort of uneven supporting surface, rapid cycle operations, or bucket
4. The combined weight of the bucket and load must not exceed these capacities.
5. Boom length for clamshell operation should not exceed 120 ft (36.6 m).

| <b>CK1000-III Clamshell Capacity in Pounds</b>                |                   |                       |                  |                   |                       |                  |                   |                       |
|---|-------------------|-----------------------|------------------|-------------------|-----------------------|------------------|-------------------|-----------------------|
| 1 Counterweight only, No Low Weight - Crawlers fully extended |                   |                       |                  |                   |                       |                  |                   |                       |
| <b>40' Boom</b>   |                   |                       | <b>50' Boom</b>  |                   |                       | <b>60' Boom</b>  |                   |                       |
| Load Radius (ft)  | Boom Angle (deg.) | 360° Rated Load (lbs) | Load Radius (ft) | Boom Angle (deg.) | 360° Rated Load (lbs) | Load Radius (ft) | Boom Angle (deg.) | 360° Rated Load (lbs) |
| 22.0  | 63.7              | 22,000 *              | 26.0             | 64.3              | 22,000 *              | 30.0             | 64.6              | 22,000 *              |
| 24.0  | 60.5              | 22,000 *              | 28.0             | 61.7              | 22,000 *              | 32.0             | 62.5              | 22,000 *              |
| 26.0  | 57.1              | 22,000 *              | 30.0             | 59.0              | 22,000 *              | 34.0             | 60.3              | 21,400 *              |
| 28.0  | 53.5              | 22,000 *              | 32.0             | 56.3              | 22,000 *              | 36.0             | 58.1              | 20,200 *              |
| 30.0  | 49.8              | 22,000 *              | 34.0             | 53.5              | 21,400 *              | 38.0             | 55.8              | 19,200 *              |
| 32.0  | 45.9              | 22,000 *              | 36.0             | 50.5              | 20,200 *              | 40.0             | 53.4              | 18,200 *              |
| 34.0  | 41.7              | 21,400 *              | 38.0             | 47.4              | 19,200 *              | 42.0             | 51.0              | 17,300 *              |
| 36.0  | 37.0              | 20,200 *              | 40.0             | 44.2              | 18,200 *              | 44.0             | 48.4              | 16,500 *              |
| 38.0  | 31.8              | 19,200 *              | 42.0             | 40.7              | 17,300 *              | 46.0             | 45.8              | 15,800 *              |
| 40.0  | 25.7              | 18,200 *              | 44.0             | 37.0              | 16,500 *              | 48.0             | 43.0              | 15,200 *              |
|   |                   |                       | 46.0             | 32.9              | 15,800 *              | 50.0             | 40.1              | 14,600 *              |
|   |                   |                       | 48.0             | 28.3              | 15,200 *              | 52.0             | 37.0              | 14,000 *              |
|   |                   |                       |                  |                   |                       | 54.0             | 33.6              | 13,500 *              |
|   |                   |                       |                  |                   |                       | 56.0             | 29.9              | 13,000 *              |
|   |                   |                       |                  |                   |                       | 58.0             | 25.7              | 12,500 *              |

# CK1000-III Clamshell Capacity in Pounds

1 Counterweight only, No Low Weight - Crawlers fully extended

| 70' Boom         |                   |                       | 80' Boom         |                   |                       | 90' Boom         |                   |                       |
|------------------|-------------------|-----------------------|------------------|-------------------|-----------------------|------------------|-------------------|-----------------------|
| Load Radius (ft) | Boom Angle (deg.) | 360° Rated Load (lbs) | Load Radius (ft) | Boom Angle (deg.) | 360° Rated Load (lbs) | Load Radius (ft) | Boom Angle (deg.) | 360° Rated Load (lbs) |
| 34.0             | 64.9              | 21,400 *              | 38.0             | 65.1              | 19,200 *              | 42.0             | 65.2              | 17,300 *              |
| 36.0             | 63.1              | 20,200 *              | 40.0             | 63.5              | 18,200 *              | 44.0             | 63.8              | 16,500 *              |
| 38.0             | 61.2              | 19,200 *              | 42.0             | 61.9              | 17,300 *              | 46.0             | 62.4              | 15,800 *              |
| 40.0             | 59.3              | 18,200 *              | 44.0             | 60.2              | 16,500 *              | 48.0             | 60.9              | 15,200 *              |
| 42.0             | 57.4              | 17,300 *              | 46.0             | 58.6              | 15,800 *              | 50.0             | 59.5              | 14,600 *              |
| 44.0             | 55.4              | 16,500 *              | 48.0             | 56.9              | 15,200 *              | 52.0             | 58.0              | 14,000 *              |
| 46.0             | 53.4              | 15,800 *              | 50.0             | 55.1              | 14,600 *              | 54.0             | 56.4              | 13,500 *              |
| 48.0             | 51.3              | 15,200 *              | 52.0             | 53.3              | 14,000 *              | 56.0             | 54.9              | 13,000 *              |
| 50.0             | 49.1              | 14,600 *              | 54.0             | 51.5              | 13,500 *              | 58.0             | 53.3              | 12,500 *              |
| 52.0             | 46.9              | 14,000 *              | 56.0             | 49.6              | 13,000 *              | 60.0             | 51.7              | 12,100 *              |
| 54.0             | 44.6              | 13,500 *              | 58.0             | 47.7              | 12,500 *              | 62.0             | 50.0              | 11,700 *              |
| 56.0             | 42.2              | 13,000 *              | 60.0             | 45.7              | 12,100 *              | 64.0             | 48.3              | 11,400 *              |
| 58.0             | 39.6              | 12,500 *              | 62.0             | 43.7              | 11,700 *              | 66.0             | 46.6              | 11,000 *              |
| 60.0             | 37.0              | 12,100 *              | 64.0             | 41.5              | 11,400 *              | 68.0             | 44.8              | 10,700 *              |
| 62.0             | 34.1              | 11,700 *              | 66.0             | 39.3              | 11,000 *              | 70.0             | 43.0              | 10,400 *              |
| 64.0             | 31.0              | 11,400 *              | 68.0             | 37.0              | 10,700 *              | 72.0             | 41.0              | 10,100 *              |
| 66.0             | 27.6              | 11,000 *              | 70.0             | 34.5              | 10,400 *              | 74.0             | 39.0              | 9,700                 |
|                  |                   |                       | 72.0             | 31.8              | 10,100 *              | 76.0             | 36.9              | 9,200                 |
|                  |                   |                       | 74.0             | 28.9              | 9,800 *               | 78.0             | 34.7              | 9,000                 |
|                  |                   |                       | 76.0             | 25.7              | 9,400 *               | 80.0             | 32.4              | 8,500                 |
|                  |                   |                       |                  |                   |                       | 82.0             | 29.9              | 8,300                 |
|                  |                   |                       |                  |                   |                       | 84.0             | 27.2              | 7,900                 |
| 100' Boom        |                   |                       | 110' Boom        |                   |                       | 120' Boom        |                   |                       |
| Load Radius (ft) | Boom Angle (deg.) | 360° Rated Load (lbs) | Load Radius (ft) | Boom Angle (deg.) | 360° Rated Load (lbs) | Load Radius (ft) | Boom Angle (deg.) | 360° Rated Load (lbs) |
| 46.0             | 65.4              | 15,800 *              | 56.0             | 62.0              | 11,900 *              | 56.0             | 64.5              | 11,400 *              |
| 48.0             | 64.1              | 15,200 *              | 58.0             | 60.8              | 11,700 *              | 58.0             | 63.4              | 11,300 *              |
| 50.0             | 62.8              | 14,600 *              | 60.0             | 59.6              | 11,600 *              | 60.0             | 62.3              | 11,200 *              |
| 52.0             | 61.5              | 14,000 *              | 62.0             | 58.3              | 11,300 *              | 62.0             | 61.3              | 11,000 *              |
| 54.0             | 60.2              | 13,500 *              | 64.0             | 57.1              | 11,100 *              | 64.0             | 60.2              | 10,800 *              |
| 56.0             | 58.8              | 13,000 *              | 66.0             | 55.8              | 10,800 *              | 66.0             | 59.0              | 10,600 *              |
| 58.0             | 57.5              | 12,500 *              | 68.0             | 54.6              | 10,400 *              | 68.0             | 57.9              | 10,200 *              |
| 60.0             | 56.1              | 12,100 *              | 70.0             | 53.3              | 10,100                | 70.0             | 56.8              | 9,900                 |
| 62.0             | 54.7              | 11,700 *              | 72.0             | 52.0              | 9,700                 | 72.0             | 55.6              | 9,500                 |
| 64.0             | 53.3              | 11,400 *              | 74.0             | 50.6              | 9,300                 | 74.0             | 54.5              | 9,100                 |
| 66.0             | 51.8              | 11,000 *              | 76.0             | 49.2              | 8,900                 | 76.0             | 53.3              | 8,800                 |
| 68.0             | 50.4              | 10,700 *              | 78.0             | 47.8              | 8,500                 | 78.0             | 52.1              | 8,400                 |
| 70.0             | 48.8              | 10,300                | 80.0             | 46.4              | 8,200                 | 80.0             | 50.8              | 8,100                 |
| 72.0             | 47.3              | 9,900                 | 82.0             | 45.0              | 7,900                 | 82.0             | 49.6              | 7,700                 |
| 74.0             | 45.7              | 9,400                 | 84.0             | 43.4              | 7,500                 | 84.0             | 48.3              | 7,400                 |
| 76.0             | 44.1              | 9,000                 | 86.0             | 41.9              | 7,200                 | 86.0             | 47.0              | 7,100                 |
| 78.0             | 42.4              | 8,800                 | 88.0             | 40.3              | 7,000                 | 88.0             | 45.7              | 6,800                 |
| 80.0             | 40.6              | 8,300                 | 90.0             | 38.6              | 6,800                 | 90.0             | 44.3              | 6,600                 |
| 82.0             | 38.8              | 8,100                 | 92.0             | 36.9              | 6,600                 | 92.0             | 42.9              | 6,400                 |
| 84.0             | 36.9              | 7,700                 | 94.0             | 35.1              | 6,400                 | 94.0             | 41.5              | 6,200                 |
| 86.0             | 35.0              | 7,400                 | 96.0             | 33.3              | 6,200                 | 96.0             | 40.0              | 6,000                 |
| 88.0             | 32.9              | 7,200                 | 98.0             | 31.3              | 5,900                 | 98.0             | 38.5              | 5,700                 |
| 90.0             | 30.7              | 7,000                 | 100.0            | 29.2              | 5,700                 | 100.0            | 36.9              | 5,500                 |
| 92.0             | 28.3              | 6,800                 | 102.0            | 27.0              | 5,500                 | 102.0            | 35.3              | 5,300                 |
| 94.0             | 25.8              | 6,600                 | 104.0            | 24.5              | 5,300                 | 104.0            | 33.6              | 5,100                 |
|                  |                   |                       |                  |                   |                       | 106.0            | 31.8              | 5,000                 |

# CK1000-III

*Note: Due to our policy of continual product improvement, all designs and specifications are subject to change without advance notice. Pictures inside this publication may show machines with optional equipment. This manual and the specifications herein were prepared for the market served by Kobelco Cranes North America Inc., including North America and Latin America. Kobelco product specifications in other world markets may differ.*

KOBELCO CRANES CO., LTD  
Oval Court Ohsaki Mark West Bldg., 17-1, Higashigotanda 2-chome,  
Shinagawa-ku, Tokyo, 141-8626 JAPAN  
Tel: +81 (0) 3-5789-2130 Fax: +81 (0) 3-5789-3372

KOBELCO CRANES NORTHAMERICA INC.  
10845 Train Court  
Houston Texas 77041 U.S.A  
Tel: 713-856-5755 Fax: 713-856-9072  
[www.kobelcocranesnorthamerica.com](http://www.kobelcocranesnorthamerica.com)